

Hardware and Networking Service

Level-I

Based on March 2022, Curriculum Version 1



Module Title: - Operating Personal Computer

Module code: EIS HNS1 M02 0322

Nominal duration: 80Hour

Prepared by: Ministry of Labour and Skill

Aug, 2022

Addis Ababa, Ethiopia

Table of Contents

Acknowledgment.....	4
Introduction to module.....	6
Unit one: Start computer, system information and features.....	6
1.1. Checking connected peripheral devices.....	8
1.2. OHS standards are checked Input voltage	9
1.3. Switching On computer power	10
1.4. Basic functions of an operating system	14
1.5. Using help and support functions	20
Self-check-1	23
Operation sheet 1.1 Switch on computer power	24
Operation sheet 1.2 Switch on computer power	24
Lap Test 1 – Instructions.....	25
Unit Two: Navigate and manipulate desktop environment	26
2.1. Create and customize desktop icons.....	27
2.2. Selecting, opening, and closing desktop icons	32
2.3. Manipulating application windows	37
Self-check-1	39
Operation sheet 2.1 Create and customize desktop icons	40
Operation sheet 2.2 Create and customize desktop icons	41
Operation sheet 2.3 Create and customize desktop icons	42
Operation sheet 2.4 Manipulating application windows	43
Lap Test 2 – Navigate and manipulate desktop environment	47
Unit Three: Organize basic directory/ folder structure and files.....	48
3.1. Organize basic directory/ folder structure and file	50
Self-check-1	53
Operation sheet 3.1 Organize basic directory/folder structure.....	54
Lap Test: 3 Instructions	58
Unit Four: Organize User files.....	59
4.1. Organize user files.....	60
Self-check-1	67
Operation sheet 4.1 Organize user files	68
Operation sheet 4.2 Organize user files	69
Lap Test: 4 Instructions	72

Unit five: Operate application software 73

5.1. Creating word document 75

5.2. Changing the Basic Setting of Documents 79

5.3. Mail Merge 86

5.4. Inserting Tables and Images 94

5.5. Selecting Basic Documents Print Settings 97

Self-check-1 110

Lap Test: 5 Instructions 112

Reference 114

Acknowledgment

Ministry of Labor and Skills wish to extend thanks and appreciation to the many representatives of TVET instructors and respective industry experts who donated their time and expertise to the development of this Teaching, Training and Learning Materials (TTLM).

Acronym

PC -Personal computer

RAM -Random-access memory

Gb-Gigabyte

USB -universal serial bus

Introduction to module

This module defines the competence required to operate a personal computer, including starting the PC, logging in, using and understanding desktop icons and their links to underlying programs, navigating a directory structure, saving work, printing, closing down the PC and working with word processing.

This module is designed to meet the industry requirement under operate personal computer occupational standard, particularly for the unit of competency: **Operate Personal Computer**

This module covers the units:

- Start and Shutdown the computer
- Access basic system information
- Navigate and Manipulate desktop environment
- Organize basic directory/ folder structure and files
- Organize files for user and/or organization requirements
- Print information
- Operate application software

Learning Objective of the Module

- Start and Shutdown the computer
- Access basic system information
- Navigate and Manipulate desktop environment
- Organize basic directory/ folder structure and files
- Organize files for user and/or organization requirements
- Print information
- Operate application software

Module Instruction

For effective use this modules trainees are expected to follow the following module instruction:

1. Read the information written in each unit
2. Accomplish the Self-checks at the end of each unit
3. Perform Operation Sheets which were provided at the end of units
4. Do the “LAP test” giver at the end of each unit and
5. Read the identified reference book for Examples and exercise

Unit one: Start computer, system information and features

This learning guide is developed to provide you the necessary information regarding the following content coverage and topics:



- **Check connected peripheral devices**
- **Check Appropriate Input Voltage**
- **Switch On/Off computer power**

This guide will also assist you to attain the learning outcomes stated in the cover page. Specifically, upon completion of this module, you will be able to:

- **Check connected peripheral devices**
- **Check Appropriate Input Voltage**
- **Turn On/Off computer power**

1.1. Checking connected peripheral devices

A computer is more than just another household appliance. The vast amount of information and possibilities can be overwhelming. But you can accomplish a lot with a computer, and using one can be a good experience. Let's walk through getting started with your first computer.

Turning on a computer for the first time can be different from one computer to the next. Your experience could be different from this unit. It's OK to ask someone for help.

If you're using a desktop computer, you'll need to make sure that peripheral device such as keyboard, mouse, and monitor etc...are plugged into the computer case before you continue. Or Review our [module: connect hardware peripheral](#) to learn more.

1.2 OHS standards are checked Input voltage

General Safety

Safe working conditions help prevent injury to people and damage to computer equipment. A safe workspace is clean, organized, and properly lighted. Everyone must understand and follow safety procedures.

Follow the basic safety guidelines to prevent cuts, burns, electrical shock, and damage to eyesight. As a best practice, make sure that a fire extinguisher and first-aid kit are available in case of fire or injury. Poorly placed or unsecured cables can cause tripping hazards in a network installation. Cables should be installed in conduit or cable trays to prevent hazards.

This is a partial list of basic safety precautions to use when working on a computer:

- Remove your watch and jewellery and secure loose clothing.
- Turn off the power and unplug equipment before performing service.
- Cover sharp edges inside the computer case with tape.
- Never open a power supply or a CRT monitor.
- Do not touch areas in printers that are hot or that use high voltage.
- Know where the fire extinguisher is located and how to use it.
- Keep food and drinks out of your workspace.
- Keep your workspace clean and free of clutter.
- Bend your knees when lifting heavy objects to avoid injuring your back.

Electrical Safety

Follow electrical safety guidelines to prevent electrical fires, injuries, and fatalities in the home and the workplace. Power supplies and CRT monitors contain high voltage.

CAUTION

Do not wear the antistatic wrist strap when repairing power supplies or CRT monitors. Only experienced technicians should attempt to repair power supplies and CRT monitors.

Some printer parts become hot during use, and other parts might contain high voltage. Check the printer manual for the location of high-voltage components. Some components retain a high voltage even after the printer is turned off. Make sure that the printer has had time to cool before making the repair.

Electrical devices have certain power requirements. For example, AC adapters are manufactured for specific laptops. Exchanging power cords with a different type of laptop or device may cause damage to both the AC adapter and the laptop.

1.3. Switching On computer power

Turning on a computer

The first step is to turn on the computer. Make sure all the cables are plugged in correctly, and locate the power button. It's in a different place on every computer, but it will have the universal power button symbol (shown below).

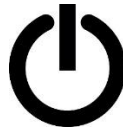
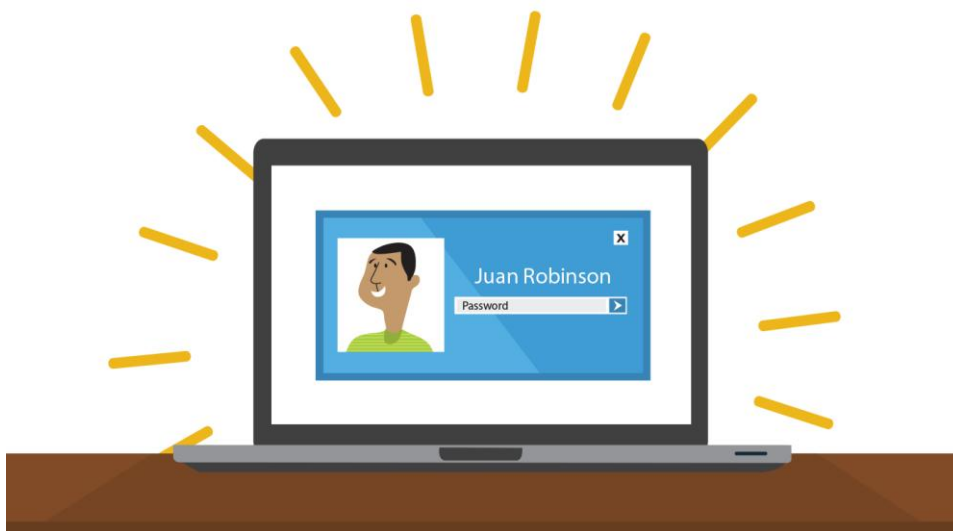


Image of a power button icon

Once turned on, your computer takes time before it's ready to use. You may see a few different displays flash on the screen. This process is called **booting up**, and it can take anywhere from 15 seconds to several minutes.

Sign in to Windows

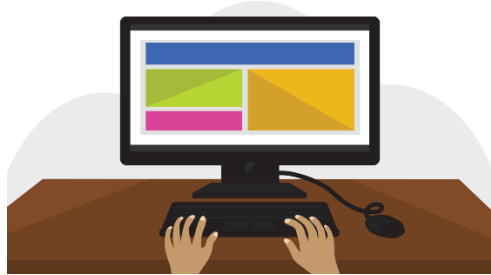
Once the computer has booted up, it may be ready to use, or it may **require** you to **log in**. This means identifying yourself by typing your **user name** or selecting your profile, then typing your **password**. If you've never logged in to your computer before, you may need to create an account.



A login screen on a laptop computer

The keyboard and mouse

You interact with a computer mainly by using the keyboard and mouse, or a trackpad on laptops. Learning to use these devices on connect hardware peripheral. Most people find it comfortable to place the keyboard on the desk directly in front of them and the mouse to one side of the keyboard.

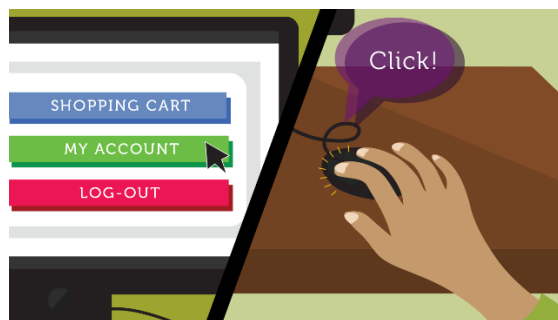


Hands on keyboard positioned in front of a computer

The mouse controls the pointer on the screen. Whenever you move the mouse across the desk, the pointer will move in a similar manner. A **mouse** usually has **two buttons**, which are referred to as the **left button** and the **right button**. You will often **interact** with the **computer** by moving the mouse pointer over something on the computer screen, then **clicking one of the buttons**.

Single or double clicks?

Single clicks are used more often than double clicks. If you use a single click and nothing happens, then try a double click. If you find double clicking very difficult, you can use a single click to select the item you want to activate, followed by pressing the Enter key.



Hand on mouse controlling the pointer on the screen

The **keyboard** allows you to **type letters, numbers, and words** into the **computer**. Whenever you see a flashing vertical line—called the cursor—you can start typing.



A blinking cursor in a browser's address bar

Note that the **mouse pointer** is also called a **cursor**, but it is shaped differently. The **keyboard cursor** is also called the **insertion point**.

Shutting down your computer

When you're done using your computer, it's important to shut it down properly.

To shut down Windows,

Click the Start button, then Select Shut down from the menu (in some versions, this may say Turn off Computer or look like the power symbol).

Restarting and Sleep mode

You can also click the **power button** for more options. For example, if your computer has become unresponsive, you can choose **Restart** to quickly turn it off and on again.

You can also choose to put your computer into **Sleep mode**. This turns off most of your computer's processes, but it remembers which applications and files are open. It allows the computer to **start up more quickly** because you won't have to wait for the operating system and applications to load.

Note that your computer may go into Sleep mode **automatically** if you haven't used it for more than a few minutes.

If you have a laptop, you can simply **close the lid** to put it into Sleep mode.

Waking your computer from Sleep mode

Page 12 of 116	Ministry of Labor and Skills Author/Copyright	Operate Personal Computer	Version -1 Aug, 2022
----------------	--	---------------------------	-------------------------

If your computer is in Sleep mode, you'll need to **wake it** to use it. To wake the computer from Sleep mode, click the mouse or press any key on the keyboard.

Sign out VS switch users

If you're finished using your account, you can **sign out**. To do this, click the **Start** button, select the current account in the top-left corner, then choose **Sign out**. Other users will then be able to sign in from the lock screen.

Switch between users without signing out or closing your current apps. Switching users will **lock** the current user, so you won't need to worry about someone else accessing your account. To do this, select the current account, then choose the desired user from the drop-down menu. You can use this same method to switch back to the other user.

1.4. Basic functions of an operating system

Definition

An operating system is a group of computer programs that coordinates all the activities among computer hardware devices. It is the first program loaded into the computer by a boot program and remains in memory at all times.

Functions of an operating system

The basic functions of an operating system are:

- **Handles system resources** such as computer's memory and sharing of the central processing unit(CPU) time by various applications or peripheral devices
- **Provides file management** which refers to the way that the operating system manipulates, stores, retrieves and saves data.
- **Booting the computer**

The process of starting or restarting the computer is known as **booting**. A cold boot is when you turn on a computer that has been turned off completely. A warm boot is the process of using the operating system to restart the computer.

- **Performs basic computer tasks**

The operating system performs basic computer tasks, such as managing the various peripheral devices such as the mouse, keyboard and printers. For example, most operating systems now are

- **Plug and play** which means a device such as a printer will automatically be detected and configured without any user intervention.
- **Provides a user interface**

A user interacts with software through the user interface. The two main types of user interfaces are: **command line** and a **graphical user interface (GUI)**. With a command line interface, the user interacts with the operating system by typing commands to perform specific tasks. An example of a command line interface is DOS (disk operating system). With a graphical user interface, the user interacts with the operating system by using a mouse to access windows, icons, and menus. An example of a graphical user interface is Windows Vista or Windows 7, 8, 10, 11. The operating system is responsible for providing a consistent application program interface (API) which is important as it allows a software developer to write an application on one computer and know that it will run on another computer of the same type even if the amount of memory or amount of storage is different on the two machines.

- **Handles system resources**

The operating system also handles system resources such as the computer's memory and sharing of the central processing unit (CPU) time by various applications or peripheral devices. Programs and input methods are constantly competing for the attention of the CPU and demand memory, storage and input/output bandwidth. The operating system ensures that each application gets the necessary resources it needs in order to maximise the functionality of the overall system.

- **Provides file management**

The operating system also handles the organisation and tracking of files and directories (folders) saved or retrieved from a computer disk. The file management system allows the user to perform such tasks as creating files and directories, renaming files, copying and moving files, and deleting files. The operating system keeps track of where files are located on the hard drive through the type of file system.

The two main types of file system are **File Allocation table (FAT)** or **New Technology File system (NTFS)**.

File Allocation table (FAT) uses the file allocation table which records, which clusters are used and unused and where files are located within the clusters.

NTFS is a file system introduced by Microsoft and it has a number of advantages over the previous file system, named FAT32 (File Allocation Table).

One major advantage of NTFS is that it includes features to improve reliability. For example, the new technology file system includes fault tolerance, which automatically repairs hard drive errors without displaying error messages. It also keeps detailed transaction logs, which track hard drive errors. This can help prevent hard disk failures and makes it possible to recover files if the hard drive does fail.

NTFS also allows permissions (such as read, write, and execute) to be set for individual directories and files.

What is Windows 10?

Windows 10 is the most recent version of the Microsoft Windows operating system. There have been many different versions of Windows over the years, including **Windows 8** (released in 2012), **Windows 7** (2009), **Windows Vista** (2006), and **Windows XP** (2001). While older versions of Windows mainly ran on desktop and laptop computers, Windows 10 is also designed to run equally well on **tablets**.

How is Windows 10 different from other versions?

Many users complained that Windows 8, the previous version of Windows, was confusing and difficult to use. As a result, Windows 10 **looks and feels similar to older versions**. Still, it includes a lot of new features and improvements.

Start menu

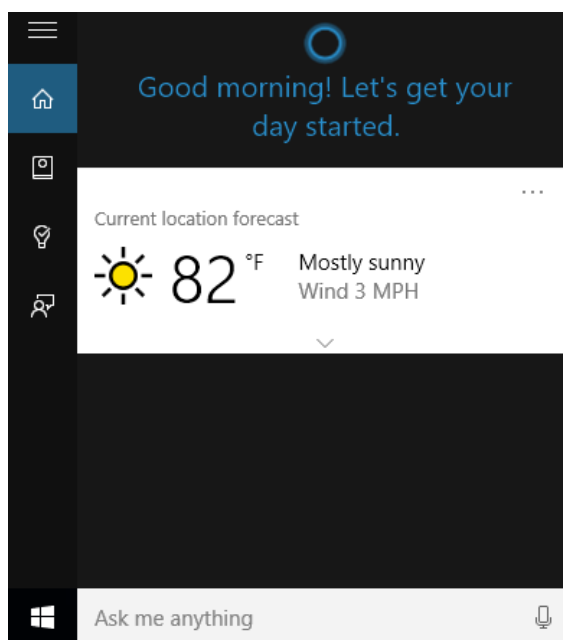
Whereas Windows 8 uses the Start screen to launch applications, Windows 10 has reintroduced a more traditional **Start menu**. It's also been expanded to make it easier to find important apps.

Microsoft Edge

This new browser is designed to give Windows users a better experience on the Web. It's faster, more secure, and includes a lot of **new features**. Microsoft Edge is meant to replace Internet Explorer as your default web browser, but you'll still be able to use another browser if you prefer.

Cortana

Similar to Siri and Google Now, you can talk to this **virtual assistant** with your computer's microphone. Cortana can answer questions like **what's the weather like today**. Perform simple tasks like **remind you to take out the trash**, and much more.



Multiple desktops and Task view

Instead of keeping everything open on the same desktop, you can move some of your windows to a **virtual desktop** to get them out of the way. And the new **Task view** feature makes it easy to manage all of your open windows.

Action Center

The new Action Center is pretty different from previous versions of Windows. For example, it's been expanded to let you access frequently used settings, such as Wi-Fi connectivity and tablet mode. It's also where you'll see important **notifications**, so if your computer receives an update you'll get a notification about it here.

Tablet mode

Unlike Windows 8, Windows 10 makes a clear distinction between desktops and tablets. If you're using a keyboard and mouse with Windows 10, you'll be in desktop mode by default. If your computer also has a touchscreen, you can go into tablet mode at any time. Tablet users can also switch back to desktop mode if they prefer.

1.5. Using help and support functions

Computer's built-in help

Everyone needs to look for help sometimes. Luckily, when you want help with a computer program, it's usually easy to find. Most programs have a help feature somewhere, and learning how to use it can make a big difference. You may not find everything you need, but your computer's built-in help is a great place to start.

Different programs integrate help features in different ways. Some are like interactive manuals included with the program that you can open with a menu, while others are just links to the developer's support website. But they're always designed with the same thing in mind: to help you learn the features of the program and to solve problems yourself.

How to access built-in help

Most programs have one of two ways to access built-in help. For example, Adobe Photoshop Elements has a **Help** menu with a variety of options. Many of these options open Adobe's support page in your web browser, while others access features within the program itself.

Other programs have a help button. For example, Microsoft Office 2016 has the Help tab with a Help button to open a search.

Features of a help file

Help files can be organized in a variety of ways, including as a table of contents, FAQ, or searchable database.

When you open the help panel in Office 2016, you'll see a search box. Much like a search engine, you type keywords in the search bar, and it will display topics relevant to the keywords you entered.

The table of contents for Mozilla's support page is a broad list of categories. Clicking any of these hyperlinks will lead to a list of narrower topics and specific help articles. There's also a search bar to help you.

Although built-in help can be useful, it may not always have the information you want. If you can't find what you're looking for or don't understand what you've found, you can usually ask someone you know, do a Google search, or contact support staff. It can take a little extra time and effort, but learning how to find solutions on your own is a valuable skill—and you'll get better at it with practice.



Self-check-1

Test-I Matching

Instruction: select the correct answer for the give choice. You have given 1 Minute for each question. Each question carries 2 Point.

- | A | B |
|--------------------------------|--|
| -----1. cold boot | A. A is the process of using the operating system to restart the computer. |
| -----2. warm boot | B. is when you turn on a computer that has been turned off completely |
| -----3. Command line interface | C. is the process of starting or restarting the computer |
| -----4. Booting | D. window vista
E. disk operating system |

Test-II Fill in the blank

Instruction: Fill the correct answer for the give blank space. You have given 1 Minute for each question. Each question carries 2 Point.

1. When the computer booting up it require _____ and _____
2. mouse pointer is also called a _____
3. _____ is a group of computer programs that coordinates all the activities among computer hardware devices
4. Keyboard cursor is also called _____ .
5. A computer Booting up, and it can take anywhere from _____ seconds to several minutes.

Operation sheet 1.1 Switch on computer power

- **Operation Title:** change power option
- **Purpose:** Changing the power options of your computer
- **Instruction:** Follow the instructions below to change power option
- **Tools and requirement:**
 - Step 1. This operation sheet
 - Step 2. Learning guides,
 - Step 3. Personal computer
- **Precautions:**
- **Procedures in doing the task.**
 - Step 1. Open the Control Panel.
 - Step 2. Select Power Options.
 - Step 3. Have a look at the different options and plans available. Select a plan/options which will conserve energy.
 - Step 4. Close the Power Options Window.

Operation sheet 1.2 Switch on computer power

- **Operation Title:** How to Set our computer to Hibernate or Standby
- **Purpose:** Set our computer to Hibernate or Standby
- **Instruction:**
- **Tools and requirement:**
 1. This operation sheet
 2. Learning guides,
 3. Personal computer
- **Precautions:**
- **Procedures in doing the task.**
 - Step 1. Click on the Start Menu.
 - Step 2. Select Shut Down.
 - Step 3. A Dialog box will appear with a drop down list. Select from the drop down list Hibernate or Standby.

Lap Test 1 – Instructions

- Task 1 Apply OHS
- Task 2 Check all peripheral device plug in correctly
- Task 3 Start the computer
- Task 4 Shut down computer
- Task 5 unplug an used peripheral

Unit Two: Navigate and manipulate desktop environment

This learning guide is developed to provide you the necessary information regarding the following content coverage and topics:

- **Create and customize desktop icons**
- **Select, open, and close desktop icons**
- **Manipulate application windows**

This guide will also assist you to attain the learning outcomes stated in the cover page.

Specifically, upon completion of this learning guide, you will be able to:

- **Create and customize desktop icons**
- **Select, open, and close desktop icons**
- **Manipulate application windows**

2.1. Create and customize desktop icons

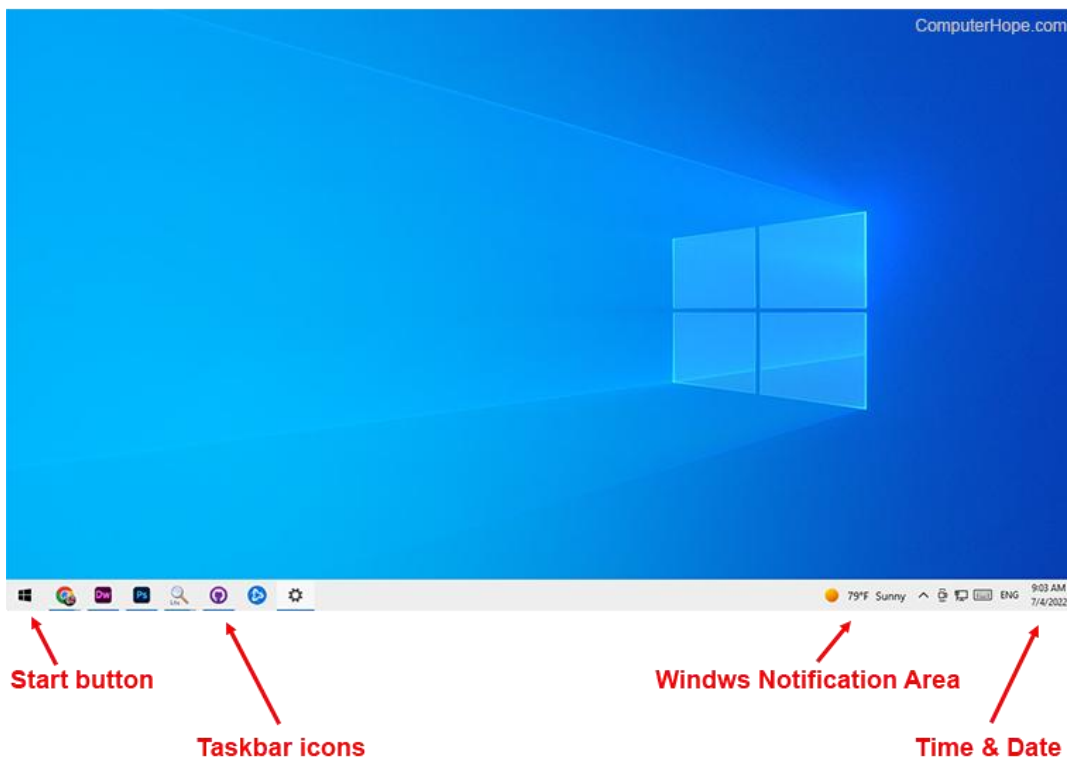
Desktop

Once you've signed in, the first thing you'll see is the **desktop**. You can think of the **desktop** as the **main workspace** for your **computer**. From here, you can view and manage your files, open applications, access the Internet, and much more.

A **desktop** may also refer to any of the following:

- A **desktop** is a term commonly used to describe a desktop computer or system unit.
- When referring to an operating system or GUI (graphical user interface), the **desktop** is a system of organization of icons on a screen. The Microsoft Windows desktop was first introduced with Microsoft Windows 95 and included with every version of Windows since then. The image below is an example of the Microsoft Windows 10 desktop.

Windows 10 Desktop



In this example, there are no icons on the desktop, and the wallpaper is a blue screen with the Windows 10 logo. Also, the taskbar is at the bottom of the desktop and contains the Start, taskbar icons, Windows Notification Area, and the time and date.

What icons and items are found on the Windows desktop?

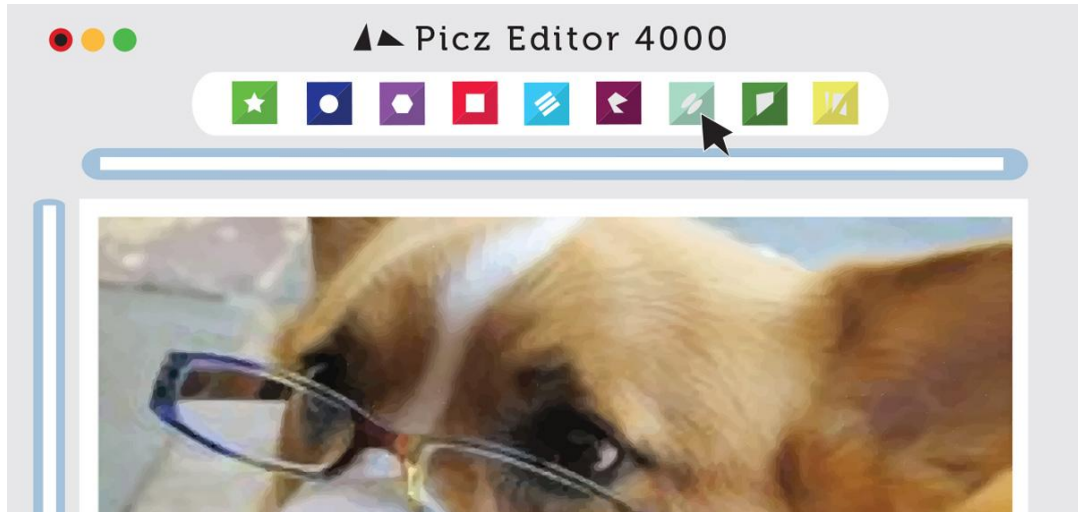
Some of the most common icons on the desktop include those for My Computer, Recycle Bin, your Internet browser (e.g., Internet Explorer), and My Documents. On the Windows desktop, you can find the Windows Start menu through the Start on the taskbar, and the Windows Notification Area.

The date and time are also shown on the desktop, in the notification area on the taskbar. If the date and time are incorrect, you can change the date and time from the desktop.

Icons are used to represent the different files, applications, and commands on your computer. An icon is a small image that's intended to give you an idea at a glance of what it represents, like a logo. Double-clicking an icon on the desktop will open that application or file.



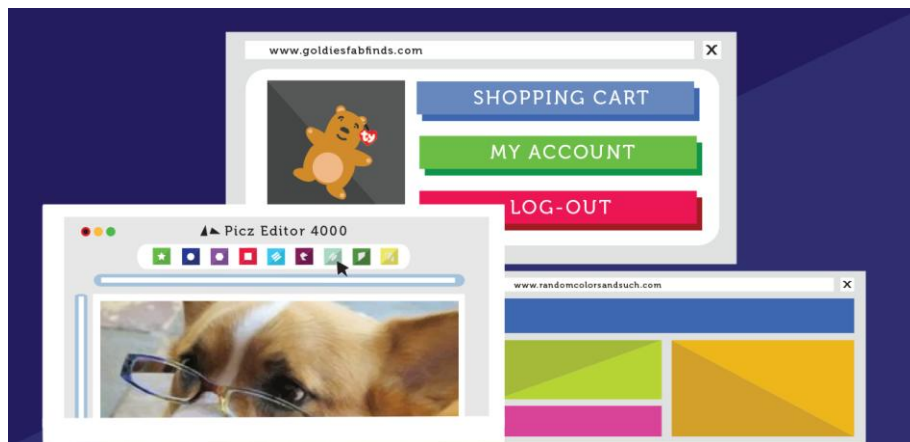
A **button** is a command that performs a specific function within an application. The most commonly used commands in a program will be represented by buttons.



Menus are organized collections of commands and shortcuts. Click a **menu** to open it and display the commands and shortcuts within. Then click an item in the **menu** to execute it.



When you open an application or folder, it is displayed in its own **window**. A **window** is a contained area—like a picture within a picture—with its own menus and buttons specific to that program. You can rearrange multiple **windows** on the desktop and switch between them.



Sort by desktop icons

The icons on the desktop can be sorted so it is easy to find them. This is a good way to group programs together that you use a lot. The long way to do this is to drag each icon with the mouse to a place on the desktop. A quicker way to sort by icons is to let the computer do it for you.

The icons will sort themselves neatly in alphabetical (A-Z) order. You can also sort them by type, size or date.

Sort desktop icons by Name

This sort will place all your program shortcuts together, and sorted alphabetically; then, display all the folders on your desktop, also displayed in alphabetical order; and, finally, all the files on your desktop, themselves also sorted according to their file name.

Sort desktop icons by Size

This is a useful sort to find all the large files on your desktop, especially if you are running out of space and are looking for the large files you can either delete, or move to an external drive. Since Windows 7 will show the smallest files first, do the same sort again to see the largest files sorted first.

Tip: when you sort your desktop icons by size, folders will not be sorted according to the size of their content; rather, they will be sorted next to program shortcuts, which like folders take virtually no space on your desktop (or hard drive). Keep in mind that some folders may take huge amount of disk space, depending on their content!

Sort desktop icons by "Item Type" (File Type)

Sorting files on your desktop by item type is a very simple way to quickly find a file, whose name you forgot, but whose type you remember (it was a PDF, an Word document...) This is also a useful way to sort desktop icons to file them in folders based on their type (we find this a good organization, since we usually remember the types of most files). Obviously, closely related files should be stored inside a common folder, regardless of their type.

Sort desktop icons by "Date Modified" (Date Last Modified)

Sorting files on your desktop by date last modified means that you can easily find the latest files you worked on, or find a particular file whose name you forgot (since you often remember when you last worked on that file).

Hide or show desktop icons

Like previous versions of Windows, some of desktop icons are visible by default in Windows 10: this means that when you minimize all programs and see your desktop,

all icons are displayed. But you can also hide your desktop icons, and show them back again any time you want. If you accidentally hide your desktop icons, or if a prankster who has access to your computer has hidden them, this lesson explains how to quickly and easily show your desktop icons again.

Advantage hide desktop icons

1. Windows starts faster when desktop icons are hidden
2. Hiding your icons gives you a bit more privacy in a public environment

Desktop shortcuts

Some of the icons are automatically placed on the desktop when Windows is installed. You can also create shortcuts. **Shortcuts** are **icons** that represent files, folders or programs. They are really only a link to the real file or program. In other words, they are like a nickname that stands for a person's real name.

All shortcuts have a **little arrow** in the **lower-left corner** of the **icon**. This indicates that the icon is a shortcut.

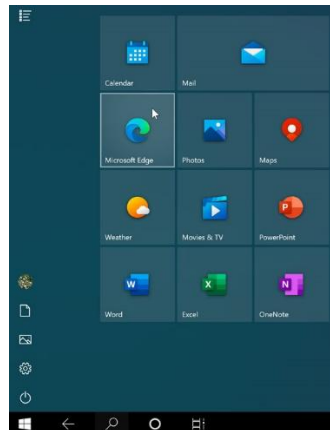
Any file, folder or program on your computer can be a shortcut. They do not use up much room on your hard disk.

It is a good idea only to make useful shortcuts. They should be used for the files or programs that you regularly use.

2.2. Selecting, opening, and closing desktop icons

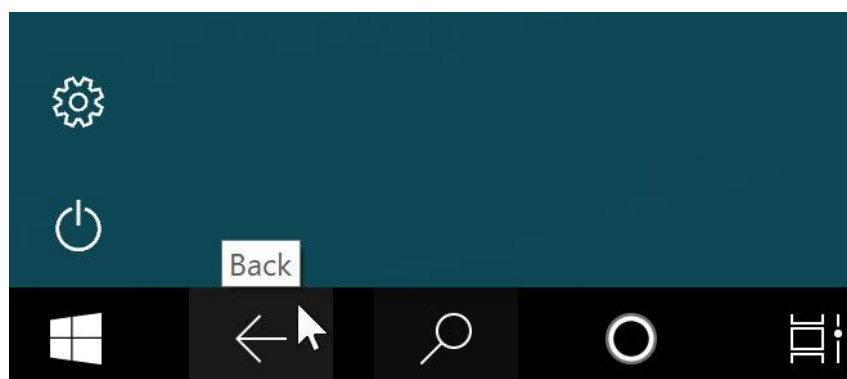
Opening applications

You'll open applications like you would from the desktop—just click or tap the desired app to open it. If you don't see the one you want, select **all apps** to see a full list of applications. In this example, we'll open **Microsoft Edge**.

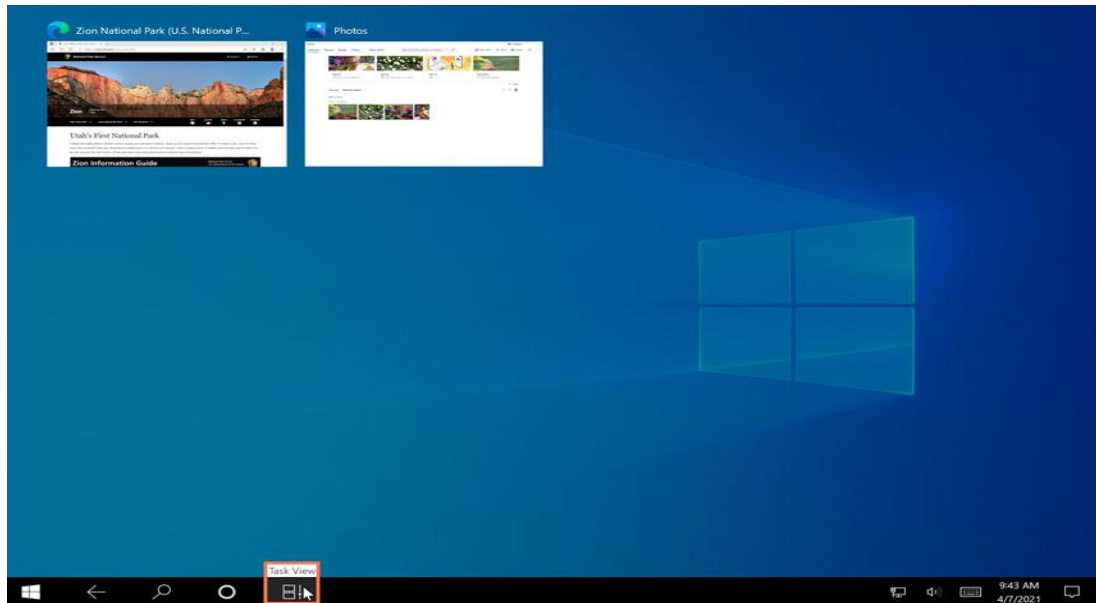


Working with multiple apps

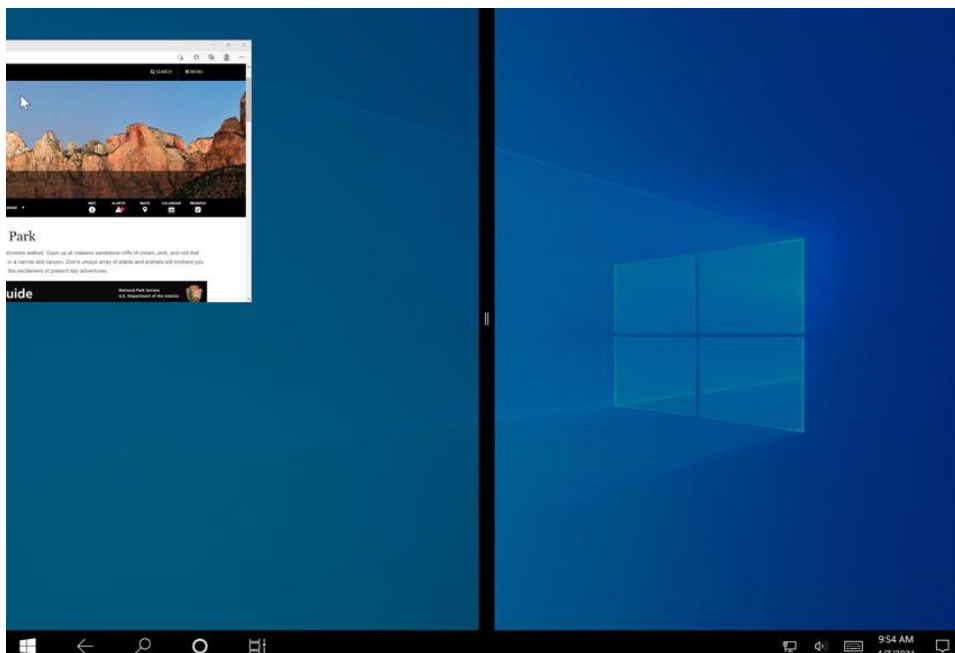
When you open an app in tablet mode, it will take up the entire screen. If you want to open another app, select the **Back** or **Start** button near the lower-left corner.



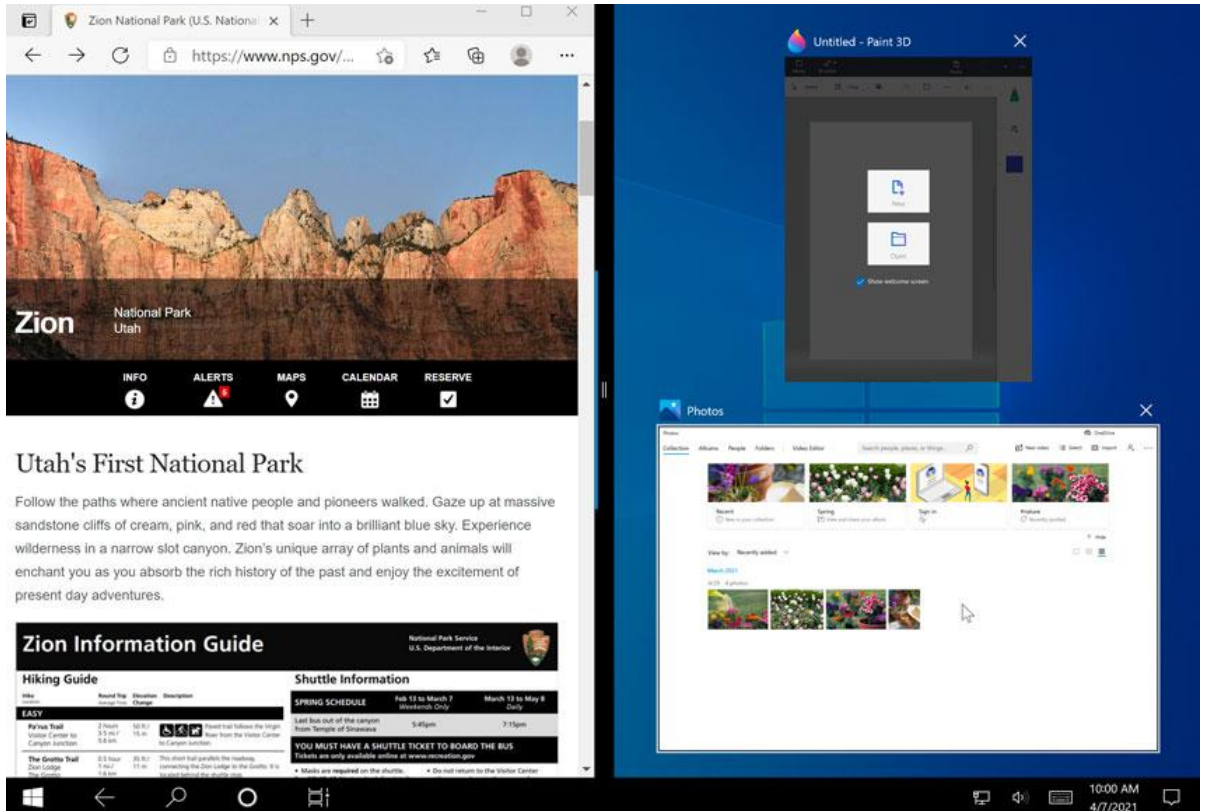
This will take you back to the full-screen Start menu so you can open another application. If you want to see all of your open apps, press the **Task view** button near the lower-left corner, then choose the app you want.



If you want to use more than one app at the same time, you can use the **Snap** feature. To do this, drag the top of an app all the way to the **right or left** side of the screen.

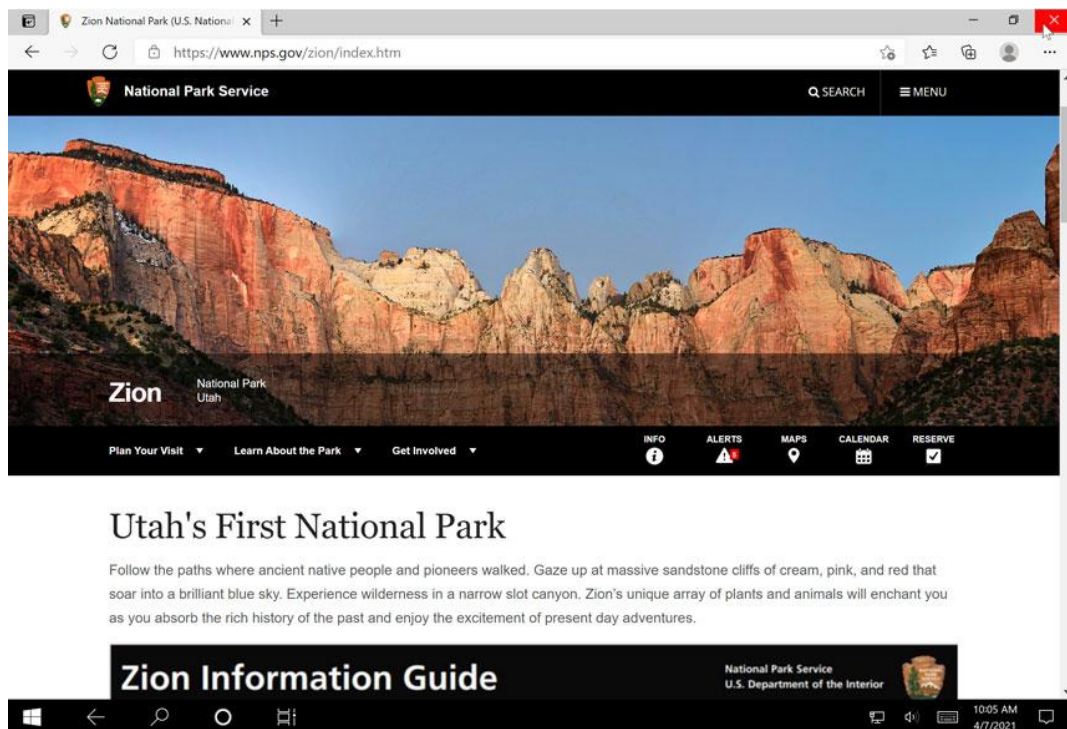


The app will snap into place. You can then choose another open app to fill up the other side of the screen.

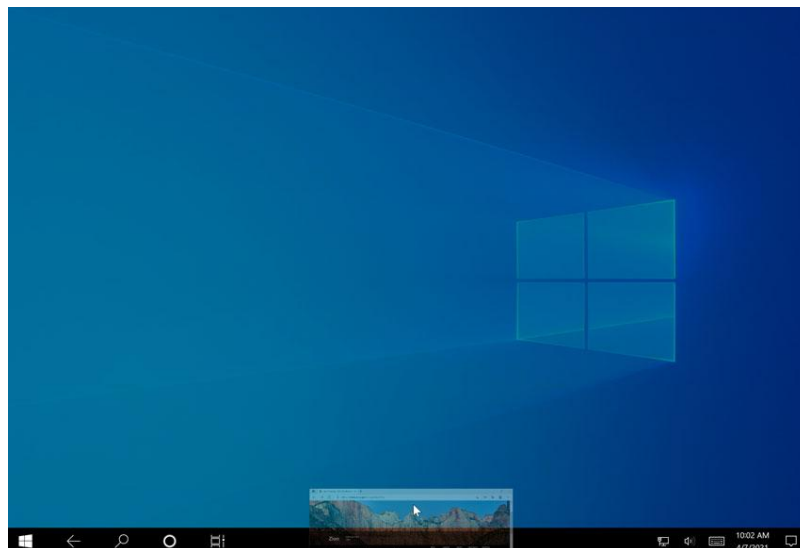


Closing apps

There are two ways to close an app in tablet mode. The first option is to use the **X** in the upper-right corner, which is the same way you'd close an app on the desktop.



The other method is to press and hold the top of the app, then **drag it all the way to the bottom** of the screen to close it.



Use Keyboard Shortcuts

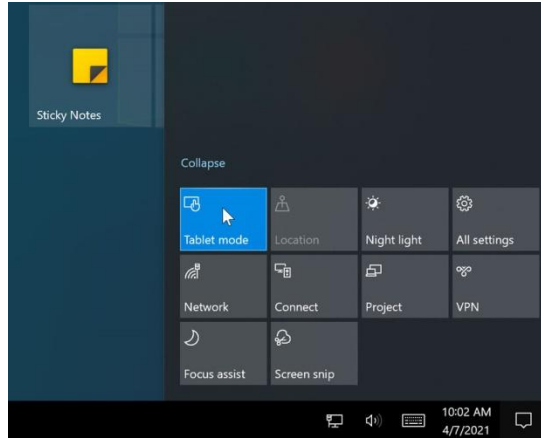
Here is a selection of some of the most common:

- Windows key + E opens File Explorer
- Ctrl + N opens a new File Explorer window of the same folder.
- Ctrl + W closes the window.
- Ctrl + D selects the address bar.
- Ctrl + F selects the search box.
- Ctrl + Shift + N creates a folder.
- Alt + Up goes up a folder level.
- Alt + Right/Left goes forward or back.

Am I required to use tablet mode?

If you don't like tablet mode, you don't have to use it. To return to desktop mode, open the Action centre, then choose **Tablet mode** to deselect it. Keep in mind, though, that some things may be more difficult to select in desktop mode if you don't have a keyboard or mouse to use with your device.

Page 35 of 116	Ministry of Labor and Skills Author/Copyright	Operate Personal Computer	Version -1 Aug, 2022
----------------	--	---------------------------	-------------------------



2.3. Manipulating application windows

An **application**—also known as a **program**—is a type of software that allows you to **complete tasks** on your computer. Windows comes with many built-in applications you can use. For example, if you want to browse the Internet, you can use **Microsoft Edge** (or **Internet Explorer** if you're using Windows 8 or earlier).

Windows 10 divides applications into two different types: **Windows apps** and **Desktop apps**.

Windows apps run from the Start screen and include the apps you have already interacted with. Desktop apps (also called programs) are run from the Desktop. Desktop apps include any applications which are independent of Windows 10. For example, if you install Microsoft Office products such as Word or Outlook, these will be Desktop apps.

Desktop apps also include some of the Windows programs. For example Paint is a basic art program which is included with Windows 10 as a Desktop app.

Working with windows

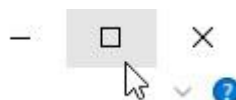
Whenever you open a file, folder, or application, it will appear in a **new window**. You can have multiple items open at the same time in different windows. You'll use windows all the time, so it's important to know how to switch between open windows, how to move and resize windows, and how to close windows when you're done using them.

Parts of a window

You'll see the same three buttons in the upper-right corner of almost every window. These buttons allow you to perform several functions, including these below.

- Click the **Minimize** button to **hide the window**. The window will be minimized to the taskbar. You can then click the icon for that window on the taskbar to make it reappear.

- Click the **Maximize** button to **make the window fill the entire screen**.



- If the screen is maximized, the Maximize button will be temporarily replaced by

Page 37 of 116	Ministry of Labor and Skills Author/Copyright	Operate Personal Computer	Version -1 Aug, 2022
----------------	--	---------------------------	-------------------------

the **Restore** button. Just click it to return the window to its original size.

- Click the **Close** button to **close** the window.

Self-check-1

Test-I Matching

Instruction: select the correct answer for the give choice. You have given 1 Minute for each question. Each question carries 2 Point.

- | A | B |
|-----------------|---|
| -----1. Icon | A. Is the main workspace for your computer |
| -----2. Desktop | B. it can be found the bottom of the desktop |
| -----3. taskbar | C. is a command that performs a specific function within an application |
| -----4. button | D. used to represent the different files, applications, and commands |
| | E. Displays general info about your PC |

Test II: Short Answer writing

Instruction: write short answer for the given question. You are provided 3 minute for each question and each point has 5 Points.

- a. Write two advantage of hiding desktop icons?
- b. What is application?
- c. What is shortcut?

Operation sheet 2.1 Create and customize desktop icons

- **Operation Title:** Add Commonly Used Icons to Desktop
- **Purpose:** Add Commonly Used Icons to the Desktop easy to access
- **Instruction:** Follow the procedures below
- **Tools and requirement:**
 1. This operation sheet
 2. Resource files
 3. Window 10 operating system install pc

- **Precautions:**

- **Procedures in doing the task.**

Step 1. Right-click anywhere on the desktop and click **“Personalize.”**

Step 2. This will open the **Personalization** section of the **Settings app.**

Step 3. Then, click on **“Themes.”**

Step 4. Now, click on **“Desktop icon settings.”**

Step 5. You can check the boxes next to the icons you want on the desktop, then click **“Apply”** and **“OK”** to make the changes.

Step 6. If you want to remove icons, you can go back to the Desktop Icon Setting and either uncheck the boxes next to the ones you want removed and click **“Apply,”** then **“OK”** to save the changes.

To change desktop Icon

Step 7. Clicking **“Change Icon....”** on **“Desktop icon settings.”**

Step 8. Then, you can select a new icon and click **“OK.”**

Operation sheet 2.2 Create and customize desktop icons

- **Operation Title:** hide and show Desktop Icons
- **Purpose:** how to hide/show icons from your desktop
- **Instruction:** Follow the procedures below
- **Tools and requirement:**
 1. This operation sheet
 2. Resource files
 3. Window 10 operating system install pc
- **Precautions:**
- **Procedures in doing the task.**

To hide desktop Icon

Step 1. Right-click empty area on the desktop

Step 2. Click on the View submenu

Step 3. Choose "Show desktop icons" - Windows 10 now displays a checkmark next to this menu item, indicating that icons are now visible. When you click on Show desktop icons, two things will happen: Windows will hide your desktop icons, and also remove the checkmark to the menu item.

To Show desktop icon

Step 1. Right-click empty area on the desktop

Step 2. Click on the View submenu

Step 3. Choose "Show desktop icons"

Operation sheet 2.3 Create and customize desktop icons

- **Operation Title:** Manually sort your desktop icons (files and folders)
- **Purpose:** You can sort your desktop files and folders (icons) by Name, by Size, by Item type, or by Date modified.
- **Instruction:** Follow the procedures below
- **Tools and requirement:**
 1. This operation sheet
 2. Resource files
 3. Window 10 operating system install pc
- **Precautions:**
- **Procedures in doing the task.**

Step 1. **Right-click** empty area on the **desktop**

Step 2. The desktop context menu will open: click on the "Sort by" submenu

Step 3. The submenu expands, and offers four choices: you can **sort** your **desktop files and folders** (icons) by **Name, by Size, by Item type, or by Date modified**. Choose your sorting order, and Windows 10 will re-arrange your desktop icons based on the sort order you picked:

Tip: when you choose to sort your desktop icons one way, it will first sort them in ascending order (A-Z, from smallest to largest, etc.) But if you then follow the same steps, and choose the same sorting order once more,

Operation sheet 2.4 Manipulating application windows

- **Operation Title:** open, minimize, maximize, restore, move and close window application
- **Purpose:** open and close window application
- **Instruction:** Follow the procedures below
- **Tools and requirement:**
 1. This operation sheet
 2. Resource files
 3. Window 10 operating system install pc
- **Precautions:**
- **Procedures in doing the task.**

Starting Applications

Desktop applications are often started from the Start screen. If you have installed programs, you may see icons for them on the Start screen.



Other applications can be launched from the Start screen by using the Search function and searching for the application to open.

Important Note

Even if a Desktop application is opened from the Start screen, it still needs to be launched from the Desktop. When you open a Desktop application from the Start screen, you will not see that the Desktop will open as well.

Task 1. Open window application

1 click on the Start.

2 Type: **Paint**. The Paint application will be located.

3 Click on  **Paint**. The Paint application will open.

Note that Paint opens in a window with the Desktop displayed behind it.

4 Leave Paint open for the next Step.

Task 2. Working with the Minimize Button

1 Using Paint, click on the Minimize button in the top right corner of the window.


The Paint window will display as a button at the bottom of the screen on the Taskbar.



2 To restore Paint, click on the  Taskbar. The Paint window will be displayed as

you left it before it was minimized.

3 Leave Paint open for the next Task.

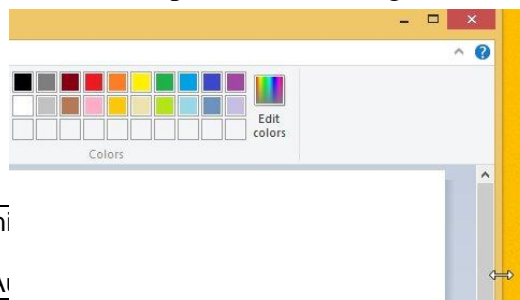
Task 3. Working with the Maximize Button

For this exercise it is assumed that your window starts as the default size (i.e. not maximized). If your Paint window is maximized (fills the whole screen) click on the Restore Down button before  continuing with the Task.

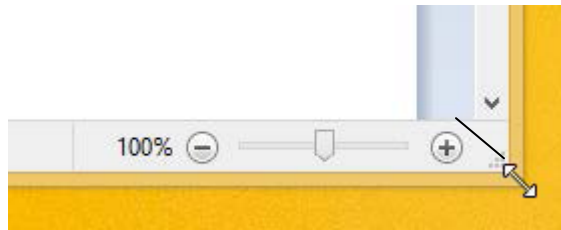
- Using Paint, click on the Maximize button . The Paint window will expand to display fully on screen.
- Note that the Maximize button has changed to display the Restore Down button
- Click on the Restore Down  button to change the window back to its former size.
- Leave Paint open for the next Task.

Task 4. Resizing a Window Using the Mouse Pointer

- Using Paint, position the mouse pointer at the right edge of the window, as shown below. The Mouse pointer will change to a double-headed arrow.



- Click and drag the mouse pointer to the left to decrease the width of the window. Then click and drag to the right to increase the width.
Note that the same technique can be used to increase or decrease the height of the window.
- To resize the window both vertically and horizontally, position the mouse pointer in the lower right corner of the window. Click and drag the mouse pointer diagonally away from the window to increase the size.



- Resize the Paint window to its original size.
- Leave Paint open for the next exercise.

Task 5. Moving a Window

- Using Paint, click on the Title bar at the top of the window.
- Holding down the left mouse button, move the window around the screen.
- When the window is in the desired location, release the mouse button.
- Leave Paint open for the next exercise.

Task 6. Close Button

The Close button is used to close windows and exit programs.

- Click on the Close button to close the Paint program.

Notepad

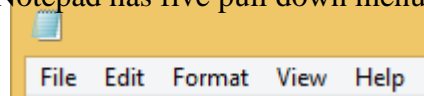
Notepad is a program supplied with Windows which allows you to create simple text documents.

Task 7. Open Notepad

- Click on the Start button at the bottom left corner of the Desktop to display the Start .
- Start typing **Notepad**.
- With selected, press Enter to open Notepad.
- Leave Notepad open for the next exercise.

Menus

SomewindowscontainamenubaratthetopofthescreeninsteadofaRibbon.Clic kingonan itemonthemenubarwilldisplayadrop-downmenu.Thesemenusprovideaccesstofeatures found within the application. Notepad has five pull down menus.



Task 8. To save, open and new

1Using Notepad, click on the word **File** on the Menu bar.A drop-down menu will display different options, e.g.New, Open, Save.

2Click on the word**File** on the Menu bar again to turn off the drop-down menu.

3Leave Notepad open for the next Task.

Task 9. Dialog Boxes

When we refer to a menu item in this book, it will appear in brackets, e.g. [File]. The next word after this will be the menu option that you are to select, e.g. choose [File] Page Setup means to click on the File menu and select the Page Setup option.

Task 10. Page setup

1. Using Notepad, choose [File] Page Setup. The Page Setup dialog box will display.

Lap Test 2– Navigate and manipulate desktop environment

- Task 1 Create word file in desktop name it file01
- Task 2 Open the file
- Task 3 Practice sizing, moving, maximizing and minimizing a window.
- Task 4 Rename file01.docx to file02.docx.
- Task 5 Create a folder in and name it TestFolder on desktop.
- Task 6 Move file02.docx to TestFolder.
- Task 7 Open a window showing the contents of the testfolder
- Task 8 Open another window that shows the contents of TestFolder (You will have two windows open now. Make sure file extensions show.)
- Task 9 Size the windows so that you see the contents of both on the screen. Make sure you can see all of the folders in the full path in both open windows.
- Task 10 Print the entire screen utilizing Word. Type your name and Printout 2 at the top of the page.

Unit Three: Organize basic directory/ folder structure and files

This learning guide is developed to provide you the necessary information regarding the following content coverage and topics:

- **Create directory**
- **Identify directory attributes**
- **Copy, and move subdirectories and directories**
- **Rename, hide/show subdirectories and directories**
- **Access subdirectories and directories**
- **Create and open documents**
- **Save, print and close documents**

This guide will also assist you to attain the learning outcomes stated in the cover page. Specifically, upon completion of this learning guide, you will be able to:

- **Create directory**
- **Identify directory attributes**
- **Copy, and move subdirectories and directories**
- **Rename, hide/show subdirectories and directories**
- **Access subdirectories and directories**
- **Create and open documents**
- **Save, print and close documents**

3.1. Organize basic directory/ folder structure and file

What is folder/Attributes?

Folders are a way of organizing your files so that it is easy to find them. This is similar to a paper filing system. In a paper filing system documents are organized into folders that describe what is in them. For instance a folder called Power Bills will include gas and electricity bills and payments. A folder called Stationery would contain stationery orders, bills and catalogues. It is important to give files and folders names that you and other members of staff can easily recognize.

What are File Attributes?

File attributes are pieces of information associated with every file and directory that includes additional data about the file itself or its contents. They can exist in only one of two states – Set or Cleared; similar to an on or off state. Attributes can be in files, directories, volumes and certain system objects. They are used by the operating system and software applications to define file system behaviour.

How are File Attributes Used?

File attributes are pieces of information associated with every file and directory that includes additional data about the file itself or its contents. They can exist in only one of two states – Set or Cleared; similar to an on or off state. Attributes can be in files, directories, volumes and certain system objects. They are used by the operating system and software applications to define file system behaviour.

Commonly Used Attributes

A byte stores the attributes of a file, with each specific attribute assigned to a bit of a byte. To enable a certain attribute, the system will assign a ‘one’ to the corresponding bit, which represents the ‘On’ state. (These are referred to as flagging or setting the attribute).

Below are the descriptions of each attribute:

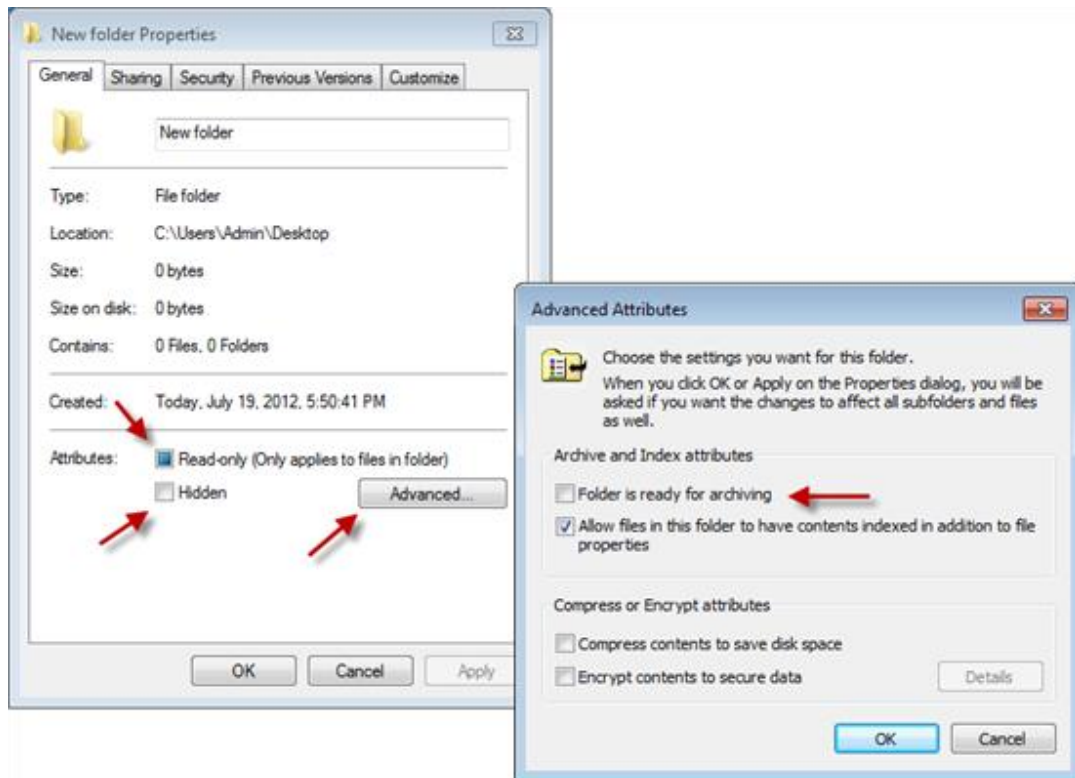
- **Read-Only (R):** Read-Only attribute will prevent software programs from saving changes to a file.

This is useful if you want to write protect a file. Note that a Read-Only file will not prevent it from being deleted.

Page 50 of 116	Ministry of Labour and Skills Author/Copyright	Operate Personal Computer	Version -1 Aug, 2022
----------------	---	---------------------------	-------------------------

- **Hidden (H):**A file marked with the hidden attribute will be hidden from view under normal viewing conditions.
- **System (S):**A file or directory used exclusively by the operating system which should not be altered or deleted.
- **Directory (D):**This attribute is tagged to folders or sub-folders to differentiate them from files.
- **Archive (A):**This bit is used by software applications that modify files as well as backup software as a “communication link”. Some backup software (for example SyncBackPro and SyncBackSE) allows incremental backups by the user, which only backs up files that have changed since the previous backup. When the backup software archives or backs up the file, it resets the archive bit (tagging it zero or Off). Any software that subsequently make changes to the file is expected to set the archive bit. Thus when the backup software runs the next time, it will be able to identify the modified files by analysing the archive bits, and backs up those files with the modified bits.

Note that certain programs may modify the files without marking the archive attribute. If the backup software uses incremental backups to backup these files, it will rely on the software to set the bit appropriately. It is therefore important to note that you should not rely solely on this setting to ensure critical files are backed up.



Self-check-1

Test-I Matching

Instruction: select the correct answer for the give choice. You have given 1 Minute for each question. Each question carries 2 Point.

A	B
-----1. Read-Only (R)	A. Used exclusively by the operating system which should not be altered or deleted.
-----2. Archive (A)	B. This bit is used by software applications that modify files
-----3. Hidden (H)	C. Prevent software programs from saving changes to a file.
-----4. System (S)	D. Hidden from view under normal viewing conditions.
	E. Tagged to folders or sub-folders to differentiate them from files.

Test II: short Answer writing

Instruction: write short answer for the given question. You are provided 3 minute for each question and each point has 5 Points.

1. What are File Attributes?
2. What is folder?

Operation sheet 3.1 Organize basic directory/folder structure

- **Operation Title:** Create, rename, copy, move, delete, restore file/folder
- **Purpose:** create, rename, copy, move, delete, restore file / folder
- **Instruction:** Follow the procedures below
- **Tools and requirement:**
 1. This operation sheet
 2. Resource files
 3. Windows 10 operating system installed PC

- **Precautions:**

Procedures in doing the task.

Task 1. Create folder/ file

- Step 1. Open the drive or folder where you want to create a folder.
- Step 2. Right-click a blank area of the window, and then point to New
- Step 3. Click New folder.
- Step 4. With the New Folder name selected, type a new name.
- Step 5. Press Enter.

Or press Ctrl + shift + N

Task 2. Moving a file/folder

- Step 1. Find the folder you want to move.
- Step 2. Right click on the file/folder
- Step 3. Select Cut from the shortcut menu that appears
- Step 4. Open the folder where you want to place it (make sure this is created first)
- Step 5. Right click on an empty space on the screen or File/folder you want to paste

Step 6. Click on Paste from the menu

Task 3. Copying a file

If you want to keep a file in its original location and also a copy in a new location, follow these steps:

- Step 1. Find the file you want to copy
- Step 2. Right click on the file
- Step 3. Select Copy from the shortcut menu that appears
- Step 4. Open the folder where you want to place it (make sure this is created first)
- Step 5. Right click on an empty space on the screen
- Step 6. Click on Paste from the menu

Task 4. Naming and renaming files

You name a file at the same time that you create it. File names can contain up to 255 characters (anykeystroke on a keyboard). They can have spaces, commas, and semicolons and can be in upper and lower case. However, files cannot contain the following characters: You can rename files at any time. This is useful if you decide the name is not easy for other people to identify.

Follow these steps to rename a file/folder:

- Step 1. Go to file/folder you want to rename and right click on it
- Step 2. Click on Rename from the shortcut menu that appears
- Step 3. Type the new name on top of the old name. As you type the old name will disappear
- Step 4. Press Enter or click outside the file/folder

Task 5. Deleting files file/folder

Follow these steps to delete a file:

- Step 1. Right click on the file you want to delete
- Step 2. Click on Delete from the shortcut menu that appears

- Step 3. If you have saved a file on to the desktop you can delete it by dragging it to the Recycle Bin using the mouse

Task 6. Restoring deleted file/folder

There might be an occasion when you send a file to the Recycle Bin by mistake, not realizing that you might still need that file for some reason. Sometimes you might not have kept a copy on file and so need to restore it (get it back).

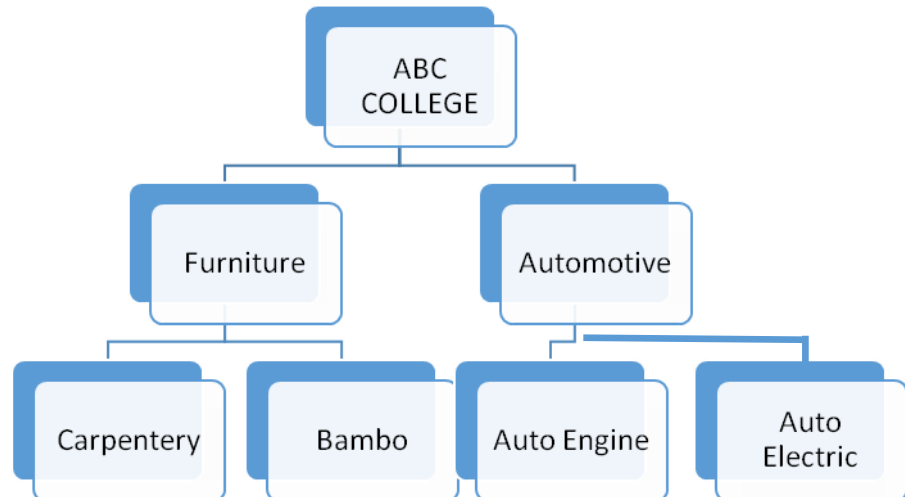
Follow these steps to restore a file/folder that is in the Recycle Bin:

- Step 1. open Recycle Bin icon on the desktop
- Step 2. Find the file/folder you want to restore
- Step 3. Right click on the file/folder you would like to restore
- Step 4. Click on Restore from the shortcut menu that appears
- Step 5. The file is restored in its original location.

Lap Test: 3Instructions

Task 1: Create the following folder structure

- A. Create the following directory structure inside **my documents**



- B. show the location/path/ of **Auto Engine folder**

Unit Four: Organize User files

This learning guide is developed to provide you the necessary information regarding the following content coverage and topics:

- **Use system browsers/search**
- **Access files**
- **Selecting, opening and renaming files**
- **Copy/ move files**
- **Deleting and restoring files**
- **Erasing and formatting disks**

This guide will also assist you to attain the learning outcomes stated in the cover page. Specifically, upon completion of this learning guide, you will be able to:

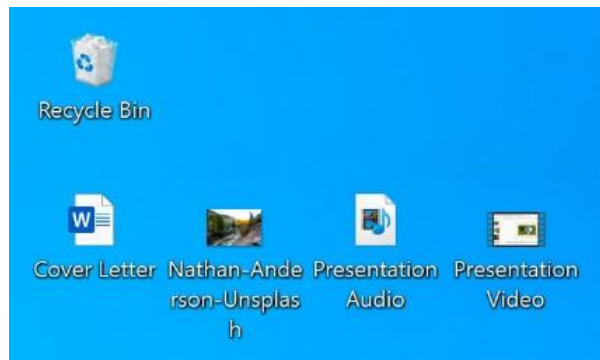
- **Use system browsers/search**
- **Access files**
- **Selecting, opening and renaming files**
- **Copy/ move files**
- **Deleting and restoring files**
- **Erasing and formatting disks**

4.1. Organize user files

What is a file?

There are many different **types of files** you can use. For example, Microsoft Word documents, digital photos, digital music, and digital videos are all types of files. You might even think of a file as a **digital version** of a real-world thing you can interact with on your computer. When you use different applications, you'll often be **viewing, creating, or editing files**.

Files are usually represented by an **icon**. In the image below, you can see a few different types of files below the Recycle Bin on the desktop.



File Explorer

You can view and organize files and folders using a built-in application known as **File Explorer** (called **Windows Explorer** in Windows 7 and earlier versions).

To open File Explorer, click the **File Explorer** icon on the taskbar, or double-click any folder on your desktop. A new File Explorer window will appear. Now you're ready to start working with your files and folders.

Common Windows file extensions

Windows file names have two parts; the file's name, then a period followed by the extension (suffix). The extension is a three- or four-letter abbreviation that signifies the file type. For example, in letter.docx the filename is letter and the extension is docx. Extensions are important because they tell your computer what icon to use for the file, and what application can open the file. For example, the doc extension tells your computer that the file is a Microsoft Word file.

File Extension	File Type
.AVI	Multimedia Audio/Video
.BAT	PC batch file
.BMP	Windows Bitmap
.CSV	Comma separated, variable length file (Open in Excel)
.DOC or .DOCX	Microsoft Word for Windows/Word97
.EXE	PC Application
.GIF	Graphics Interchange Format
.HTM or .HTML	Web page source text
.JPG or JPEG	JPEG graphic

.MDB	MS Access database
.PDF	Acrobat -Portable document format
.PNG	Portable Network Graphics
.PPT or .PPTX	PowerPoint
.PSD	Adobe PhotoShop
.RTF	Rich Text Format
.TIF	TIFF graphic
.TXT	ASCII text (Mac text does not contain line feeds--use DOS Washer Utility to fix)
.WAV	Windows sound
.XLS or .XLSX	Excel spreadsheet
.ZIP	PC Zip Compressed Archive

Common places to look for files

If you're having a difficult time finding a file, there's a good chance you can find it in one of the following places:

- **Downloads:** By default, your computer will place downloaded files in a specific folder, known as the **Downloads** folder. If you're having trouble finding a file you downloaded from the Internet, such as a photo attached to an email message, this is the **first place** you should look. To view the Downloads folder, open **File Explorer**, then locate and select **Downloads** (below **Favorites** on the left side of the window). A list of your recently **downloaded files** will appear.

- **Default folders:** If you don't specify a location when saving a file, Windows will

Page 62 of 116	Ministry of Labour and Skills Author/Copyright	Operate Personal Computer	Version -1
			Aug, 2022

place certain types of files into default folders. For example, if you're looking for a Microsoft Word document, you could try looking in the **Documents** folder. If you're looking for a photo, try looking in the **Pictures** folder. Most of these folders will be accessible on the left side of the File Explorer window.

- **Recycle Bin:** If you deleted a file by mistake, it may still be in the Recycle Bin. You can double-click the Recycle Bin icon on the desktop to open it. If you find the file you need, click and drag it back to the desktop or to a different folder.

Tips for finding files

If you're still having trouble finding the file you need, here are some additional tips.

- **Try different search terms.** If you're using the search option, try using different terms in your search. For example, if you're looking for a certain Microsoft Word

Page 63 of 116	Ministry of Labour and Skills	Operate Personal Computer	Version -1
	Author/Copyright		Aug, 2022

document, try searching for a few different file names you might have used when saving the document.

- **Open the last application used to edit the file.** If you know you used a certain application to edit a file, open that application and select **File > Open > Recent** from the menu. The file may appear in the list of recently edited files.

Searching for files

Let's say you recently downloaded a few photos that were attached to an email message, but now you're not sure where these files are on your computer. If you're struggling to find a file, you can always **search for it**. Searching allows you to look for **any file** on your computer.

To search for a file:

In the **Search Box** next to the Start button, type to search for a file. The search results will appear above the search box.

Bringing your files with you

When you're working on a document or other computer file, you can always save it to your computer's hard drive. Sometimes, you may want to bring your file with you using USB drive and open it on a different computer.

USB drive: USB or flash drives are small, removable hard drives that plug into

Page 64 of 116	Ministry of Labour and Skills Author/Copyright	Operate Personal Computer	Version -1
			Aug, 2022

the USB ports on your computer. They are relatively inexpensive and can be purchased at any store with an electronics section.

Using a USB drive

USB or flash drives are **portable**, making it easy to carry your important files and documents with you wherever you go. USB drives have different amounts of **memory**, or storage space. Those with more memory allow you to store more (or larger) files. It's helpful to know that photo and video files generally take up more space than written documents.

What is formatting?

Formatting is the process of prepping a storage device, like a hard drive, solid-state drive, flash drive etc, to store information. It creates a filing system that organizes your data and allows you to maximize the space for your files. It's typical to format a drive when a new operating system is going to be used or additional space is required.

There are two types of formatting on a USB drive:

- **Quick format:** Deletes the file system table and the root folder. This option is frequently used for USB flash drives to efficiently free up the available space to transfer or store other files. It's not the most secure way to delete your files because the data may still be recoverable with data recovery tools.
- **Full format:** Will scan for bad sectors and write zeros in all sectors, which deletes all data permanently. This action can take a long time, depending on the capacity of the drive.

File system options

When formatting your drive, it's important to understand the different formatting options available for your ideal use. The file systems most commonly used in USB flash drives are:

- **FAT32** is a common option you'll hear because it's recognised by both Mac and Windows operating systems, but it offers no security and caps files at 4GB in size. Most USB flash drives will have a FAT32 file system out-of-box. It is the most compatible file system for older/modern computers (PC and Mac) plus gaming consoles and other devices with a USB port.
- **exFAT** is the ideal file system for USB flash drives. It doesn't have the 4GB file size limit and it's compatible with most Windows and Mac operating systems. Older operating systems might require an update to properly read and write to a USB drive with an exFAT file system.

- NTFS format is the file system Windows likes to use by default for internal drives running the operating system or used as a secondary storage drive. It has a much larger max file size but is read-only on Mac OS X (unless you install a third party NTFS read/write utility).
- Mac OS Extended is the native solution for Mac users and has the max file size of any of them. Only use this option if the drive will only be used in Mac OS. Windows will not detect this file system without a third party utility.

There are tools available to use NTFS on a Mac (Fuse) or HFS on PC (HFSExplorer). Another option, for those who use both Windows and Mac OS regularly, is to partition your hard drive and have a portion of the drive formatted for each OS.

Self-check-1

Test-I Matching

Instruction: select the correct answer for the give choice. You have given 1 Minute for each question. Each question carries 2 Point.

A	B
-----1. .EXE	A. PC application
-----2. .PPTX	B. Power point
-----3. .WAV	C. Multimedia Audio/Video
-----4. .PDF	D. Acrobat -Portable document format
	E. Windows sound
	F. Excel spreadsheet

Test II: short Answer writing

Instruction: write short answer for the given question. You are provided 3 minute for each question and each point has 5Points.

- c. What is File?
- d. What is USB drive /flash

Operation sheet 4.1 Organize user files

- **Operation Title:** Formatting drives in Windows
- **Purpose:** formatting USB drives
- **Instruction:** Follow the procedures below
- **Tools and requirement:**
 1. This operation sheet
 2. Resource files
 3. Window 10 operating system install pc
- **Precautions:**

Procedures in doing the task.

- Step 1. Insert a USB drive into a USB port.
- Step 2. Open File Explorer.
- Step 3. Click on This PC from the left pane.
- Step 4. Under the "Devices and drives" section, right-click the flash drive and select the Format option.
- Step 5. Use the "File system" drop-down menu and select the preferred option.
- Step 6. In the "Allocation unit size" drop-down menu, use the default selection.
- Step 7. In the "Volume label" field, confirm a drive name that will appear in File Explorer. For example, KingstonUSB.
- Step 8. Under the "Format options" section, select the Quick format option or don't depending on the use case.
- Step 9. Click the Start button.
- Step 10. Click the Yes button.
- Step 11. Once format is finished, the USB flash drive will be all set to store documents, pictures, videos, and other files on the removable drive.

Operation sheet 4.2 Organize user files

- **Operation Title:** Search files/folder
- **Purpose:** search file by name and extension name
- **Instruction:** Follow the procedures below
- **Tools and requirement:**
 4. This operation sheet
 5. Resource files
 6. Window 10 operating system install pc
- **Precautions:**

Procedures in doing the task.

Searching

File Explorer contains a search tool which can be used to search for files/folders that contain certain text, were created on a certain date, are of a particular type, etc.

Searching from File Explorer

The Search box is located at the right of the Address bar in the File Explorer screen.

Search box



To perform a basic search, select the folder or drive you wish to search in the Navigation Pane, enter a search term into the Search box and press Enter.

Task 1. Search files

Step 1. 1 Open File Explorer Navigation Pane.

Page 69 of 116	Ministry of Labour and Skills Author/Copyright	Operate Personal Computer	Version -1 Aug, 2022
----------------	---	---------------------------	-------------------------

Step 2. 2 Click in the Search box at the top right of the window.

Step 3. 3 Type file name you want to search: e.g. **Hawkesbury**.

Step 4. As you start to type, any documents that contain the text being entered will be listed.



Hawkesbury Explorer holidays

The **Hawkesbury** X'er has no other cruising equivalent in Australia. For mile after mile, it winds its way through beautiful ... The **Hawkesbury** Explorer Cruise costs...

Step 5. You can get your file easily Click on the Cancel button in the Search box to cancel the search.

Step 6. Leave File Explorer open for the next Task

Task 2. Search by extension name

Search Tools can be used to perform more complex searches.

Step 1. Open File Explorer Navigation Pane.

Step 2. Click in the Search box. The Search Tools Search tab will be added to the Ribbon. Check the Search Ribbon is displayed.

Step 3. In the Search box type **.docx**. This is the file extension given to Microsoft Word documents.

Step 4. All documents with this extension will display.

Step 5. Click on the Cancel button in the Search box.

Lap Test: 4Instructions

Task 1 Search all word file from my document

Task 2 Format USB drive

Unit five: Operate application software

This learning guide is developed to provide you the necessary information regarding the following content coverage and topics:

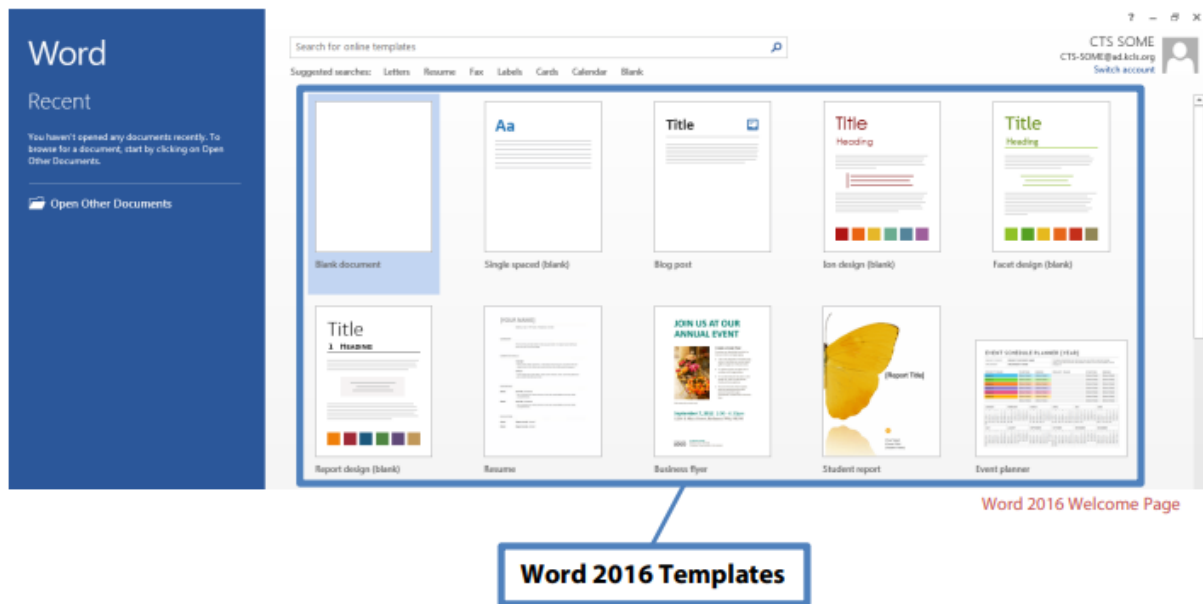
- **Create word document**
- **Change the Basic Setting of Documents**
- **Use Mail Merge**
- **Insert Tables and Images**
- **Select Basic Documents Print Settings**

This guide will also assist you to attain the learning outcomes stated in the cover page. Specifically, upon completion of this learning guide, you will be able to:

- **Create word document**
- **Change the Basic Setting of Documents**
- **Use Mail Merge**
- **Insert Tables and Images**
- **Select Basic Documents Print Settings**

5.1. Creating word document

Open **Word 2016** from the computer desktop. On the Welcome page, note the various popular templates available. Click **“Facet design (blank)”** template for a full description. Click **“Create”** to open a document in this particular style.



Microsoft Word 2016 Interface

The way the tools and menus are organized in Word 2016 is known as the user interface.

You will learn about **The Ribbon**, **Quick Access Toolbar**, **File Menu** and other key parts of Word.

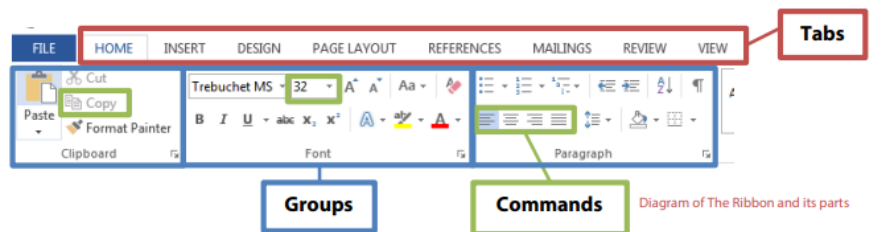
The Ribbon

The Ribbon **runs along the top**, contains all the Word tools, and is organized into three parts:

- **Tabs** – represent a general activity area
- **Groups** – show related tools (commands) together
- **Commands** – a button, expandable menu, or a box for entering related information

Click the various Tabs: observe how the Groups and Commands change based on the selected Tab

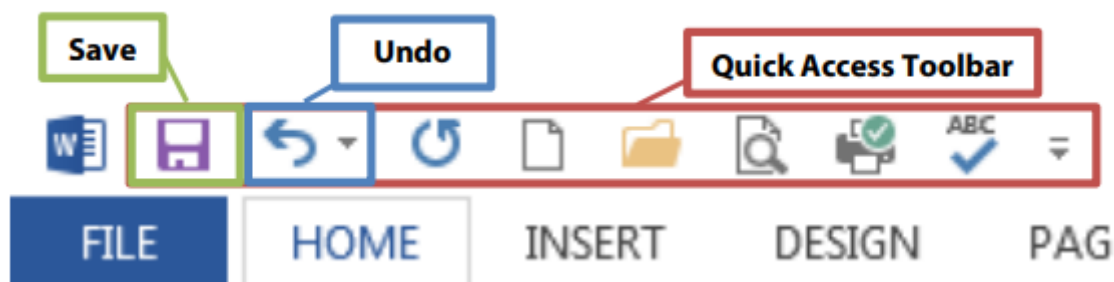
Page 75 of 116	Ministry of Labour and Skills	Operate Personal Computer	Version -1
	Author/Copyright		Aug, 2022



Quick Access Toolbar

The Quick Access Toolbar is above the Tabs and **has commands used most often**, including “Save”. **Place the mouse arrow over each icon (do not click) to see the name and use for each icon.** You may customize the commands in the toolbar if you click the black arrow at the end of the toolbar.

The Undo command “takes back” any changes made to the document. For example, type “Undo” in the blank document you have open, then click Undo in the Quick Access Toolbar. Undo keeps track of actions by sequence; if you accidentally erase (change) data in your file, click Undo right away to get it back. On that note, it is important to “save early and save often.” (See “Saving Your Work” on page 5.)



File Menu

The File Menu contains actions at the file level. Click the blue “File” tab to the far left of the tabs. What you’ll see is the “backstage” area. From here, you can create a New document, Open an existing one, Save changes to the current document, Save As a different file with a different name, Print the current document, and other options. Click the “back arrow” at the top to exit the backstage area.

Title Bar, Help Menu, Ribbon Display Options

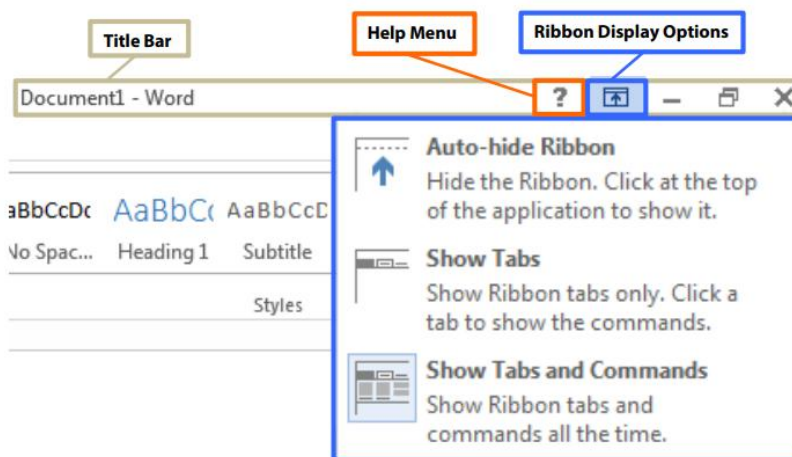
The Title Bar shows the name of the program and the name (title) of your document. (Top-most bar in program window.) A new document has a temporary title, Document1, until you “Save As” with a different name. To the far right on the Title Bar is the Help Menu and Ribbon Display options.

Page 76 of 116	Ministry of Labour and Skills Author/Copyright	Operate Personal Computer	Version -1 Aug, 2022
----------------	---	---------------------------	-------------------------

The Help Menu has articles on using the software. Not sure how to perform a certain action or where to find a command? Click the question mark icon to browse Help articles, or search for specific topics.

Ribbon Display Options allow you to see more or less of the Ribbon and the work area, as a result.

Take a moment to locate and explore these features in the Word program window.



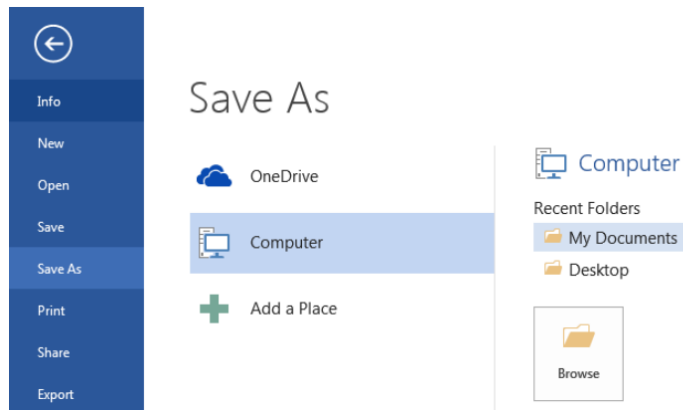
Using Tools in Word

Start learning about word processing by working in a Microsoft Word 2016 document.

Save Your Work

To make sure you don't lose your work on a document, you should "save early and save often." Let's start by saving the document you have open in Word 2016:

1. Click the blue File Button near the Tabs.
2. Click Save As. This option is for saving, or naming, a file for the first time.
You may create different versions of a file by "saving as" a new name.
3. Click "My Documents" folder. Select your folder
4. Name file "My Practice Document". Generally, choose a name that is easy to remember.
5. Click Save.



5.2. Changing the Basic Setting of Documents

Get Ready for Typing

The main workspace in Word resembles a piece of paper on your screen. Note the vertical blinking line, the cursor, near the top left of the paper. Cursor and mouse pointer shape offer hints in Word.

The Cursor

The cursor indicates where text will appear as you type; it also indicates font size for that spot. Earlier, you created a document from the “Facet design (blank)” template on the Welcome Page. Note the size of the cursor next to the word “Title”. What is the font size value for the word “Title”? (Look toward the Font Group in the ribbon.)

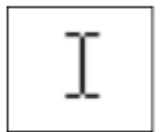
Now move your mouse pointer in front of the word “Heading” and left-click once. This moves the cursor. Note the cursor size and font size value in the font size box. What is the font size value?

Mouse Pointer Shape

You may have noticed the mouse pointer changes shape as you move to different areas in Word. The two most common shapes indicate different functions. The **mouse pointer arrow** is for clicking commands, or buttons in general. The **mouse pointer text tool** (I-Beam) is for selecting text or positioning cursor for typing. You will use the document you have open now to practice using various key Groups and Commands in the Word Ribbon. Let’s select and change text in your document.



Mouse pointer arrow



Mouse pointer text tool

Keyboard Shortcuts

These shortcuts are a handy way to use the mouse less. Activate them by holding down one of the Ctrl (Control) keys on the keyboard and tapping the corresponding key. For some shortcuts, you have to highlight the text first. Follow your instructor’s directions to apply these shortcuts to a document (if Paragraphs document is still open, use it as an example or write a few new sentences on a blank page).

Ctrl + P	print
Ctrl + A	select all
Ctrl + C	copy
Ctrl + V	paste
Ctrl + X	cut
Ctrl + N	opens new window/document
Ctrl + S	save
Ctrl + Z	undo
Ctrl + Y	redo
Ctrl + B	bolds text
Ctrl + I	<i>italicizes text</i>
Ctrl + U	<u>underlines text</u>
Ctrl +]	enlarges text by one size
Ctrl + [decreases text by one size
Ctrl + E	centers text
Ctrl + L	aligns text to the left
Ctrl + R	aligns text to the right

Selecting Text

Selecting text to make edits is an important word processing skill. **A common way to select text is:**

1. Place mouse pointer text tool next to the text. In this case, place it next to next to “T” in “Title”.
2. Press the left mouse button.
3. Drag it across the text.
4. Let go of the left mouse button.

Notice “Title” is selected (highlighted). Go ahead and type “My Practice Document”.

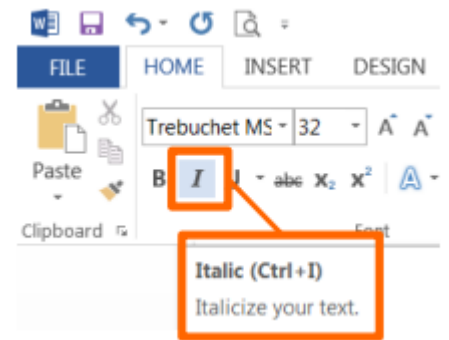
Selecting Lines and Paragraphs

To select a complete line of text (use paragraph in your practice document):

1. Place mouse pointer arrow in left margin next to line of text (arrow will point to the right).
2. Left-click once to select that line of text.

To select several lines or a paragraph:

1. Place mouse pointer arrow in left margin next to line of text (arrow will point to the right).
2. Press (hold down) the left mouse button.
3. Drag to the end of the paragraph.
4. Let go of the left mouse button.



Next, you will use commands from the ribbon to edit text you have selected.

Home Tab

The Home Tab has the groups of commands that people use most often.

Font Group

The Font Group contains commands that change the appearance of the font. Font is the set of characters (letters, numbers, punctuation, etc.) in a particular style. For example, the document you created from the “Facet design” template on the Welcome page uses “Trebuchet MS” font, but you can still use the font commands in your document.

Here’s how to italicize text

1. Select the word “Practice” in the document title.
2. Click italics icon in Font Group (see screenshot).

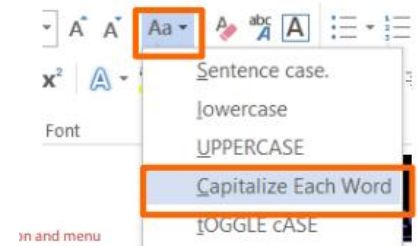
Page 81 of 116	Ministry of Labour and Skills Author/Copyright	Operate Personal Computer	Version -1 Aug, 2022
----------------	---	---------------------------	-------------------------

TIP: Italic, like Underline, is used to emphasize words or sentences in text, and book and movietitles. Though italics are more common, you can use either in your documents, but use oneconsistently throughout.

Notice Word automatically capitalized the first word in the sentence. If you want each word capitalized, as a title or header normally is, you may do it word by word or simply use **Change Case**.

To use Change Case command:

1. Select “How to use this template”.
2. Click “Change Case” command.
3. Click “Capitalize Each Word” in menu.



TIP: A general rule to make changes to text is first select the text and then click the command button of your choice. You may change font size or style before you start typing, too. Look in the Font Group to see the font and size that will appear when you begin to type.

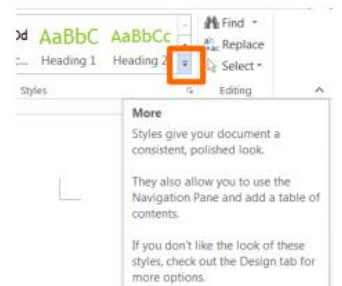
Take a moment to read the paragraph in your practice document under “How To Use This Template”. You will use some commands from the Styles Group and Paragraph Group under the Home Tab.

Style Group

A document created from a template, like the one you opened earlier (Facet design blank), has predesigned styles for different parts of the document, such as paragraphs and headers.

To apply a different paragraph style:

1. Select paragraphs under “How To Use This Template”.
2. Click “More” button in Styles Group.
3. Click “Emphasis” command.



“More” button in the Styles Group

The text remains selected. You may continue modifying, including Undo, if you wish. To de-select, press left arrow (cursor placed at beginning of text), right arrow (cursor placed at end of text) or click in an area outside theselection.

To create a new heading (section):

1. Click “More” button in Styles Group.

Page 82 of 116	Ministry of Labour and Skills Author/Copyright	Operate Personal Computer	Version -1 Aug, 2022
----------------	---	---------------------------	-------------------------

2. Click “Heading 1”.
3. Type “Learning more about the home tab”.
4. Press “Enter” once.
5. Type “The Home Tab contains the following Groups:”
6. Press “Enter” once.

You now have a new header and introductory sentence. You will use commands from various groups at various times, so don’t be surprised that you will use a command from the Paragraph Group next.

To create a bulleted list:


1. Click “Bullets” command in Paragraph Group.
2. Type “Clipboard”.
3. Press “Enter” once.
4. Re-create list pictured to the right
5. (Repeat step 2 & 3 for each word).
6. After last item in your list, press “Enter” twice.


Learning More about the Home Tab

The Home Tab contains the following Groups:

- Clipboard
- Font
- Paragraph
- Styles
- Editing

Your document header and bulleted list will look this.

Bullets are good for general lists of items. A numbered list is good for steps in a procedure or order. The steps to make a numbered list  are the same, except the icon for numbering is

TIP: For style or space, explore decreasing indent space for lists. Bullets or numbers automatically indent to set lists apart from regular text. But if you like the style of left margin alignment, the bullets or numbers set the list apart from the text sufficiently. 

Clipboard Group

The Clipboard Group has the commands to do “copy and paste” and “cut and paste”.

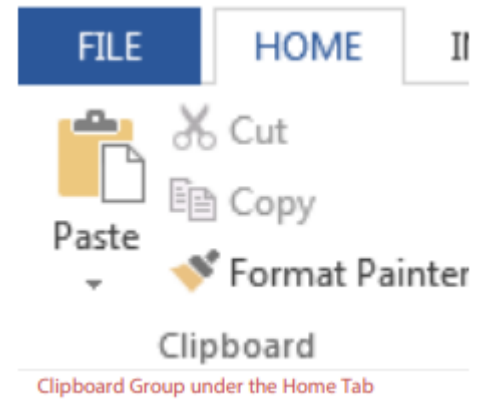
Before you start:

1. Make a new sub-heading in your practice document.
 - a. Use “Heading 2” style from Styles Group.

- b. Type “Clipboard Group”.
 - c. Press “Enter” once.
2. Type two sentences on one line.
 - a. “I want to live in a warm place. I am moving to Hawaii.”

To Copy and Paste text:

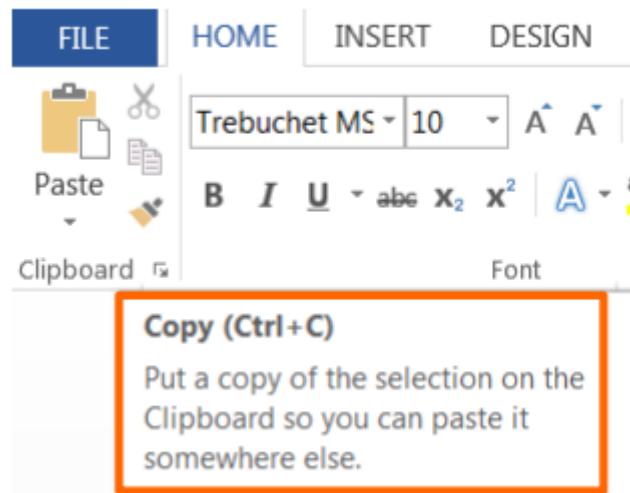
1. Select the text (the line of text you just typed).
2. Click “Copy” icon in Clipboard Group.
3. Move cursor to area where you want to paste (right arrow, then “Enter” once).
4. Click “Paste” icon in Clipboard Group.



To Cut and Paste text:

1. Select the text (the sentence “I am moving...”).Click “Cut” icon in Clipboard Group.
2. Move cursor to area where you want to paste (at beginning of first sentence on same line).
3. Click “Paste” icon.Can you think of a scenario where you might choose one command (Copy, Cut) over the other?

TIP: Use keyboard shortcuts to save a little time. When you place the mouse pointer arrow over a command without clicking, a floating box appears with the command name, keyboard shortcut in parenthesis and a brief description.



Paragraph Group

The Paragraph Group includes commands to adjust line and paragraph spacing and alignment. Line spacing refers to when the text you're typing has reached the end of the line and moves down to the next line automatically. Paragraph spacing refers to any time you press the "Enter" key to start a new paragraph.



5.3. Mail Merge

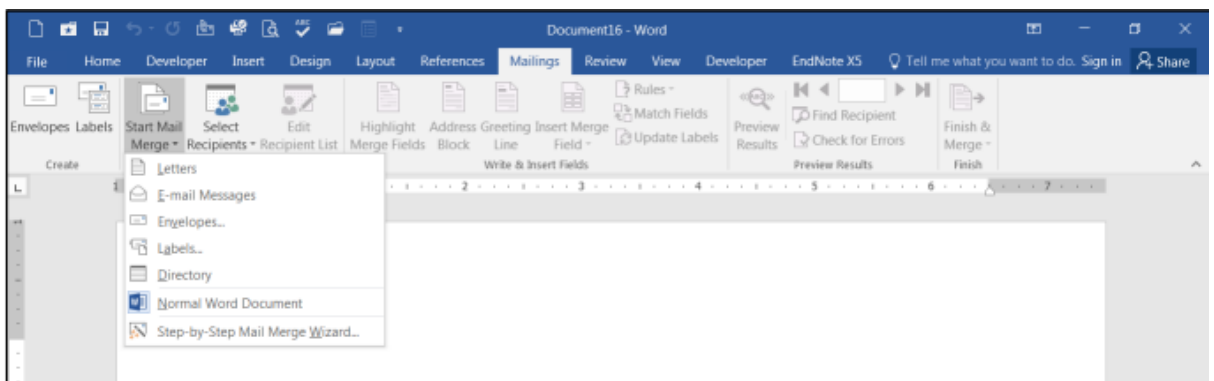
Mail merge is a tool which allows you to create form letters, mailing labels and envelopes by linking a main document to a data source. It is the process of combining a list of data with a template.

The mail merge process involves the following:

- **The Main Document** – contains the text and graphics that are the same for each version of the merged document.
- **Data Source** – a file that contains the information to be merged into a document. For example, the names and addresses of the recipients of a letter.

Mail Merge – Form Letters

- 1) Open Word and create a new blank document
- 2) Type the letter with all needed text and formatting, leaving room for the data from the data source (example: name, address, etc.)
- 3) Click the **Mailings** tab
- 4) Click **Start Mail Merge**
- 5) Click Step-by-Step Mail Merge Wizard



The **Mail Merge task pane** appears on the right of your screen. Note there are 6 steps.

Step 1. – Select Document Type

- 1) Click Letters for the document type

Page 86 of 116	Ministry of Labour and Skills Author/Copyright	Operate Personal Computer	Version -1 Aug, 2022
----------------	---	---------------------------	-------------------------

- 2) Click Next: Starting document

Step 2. – Select Starting Document

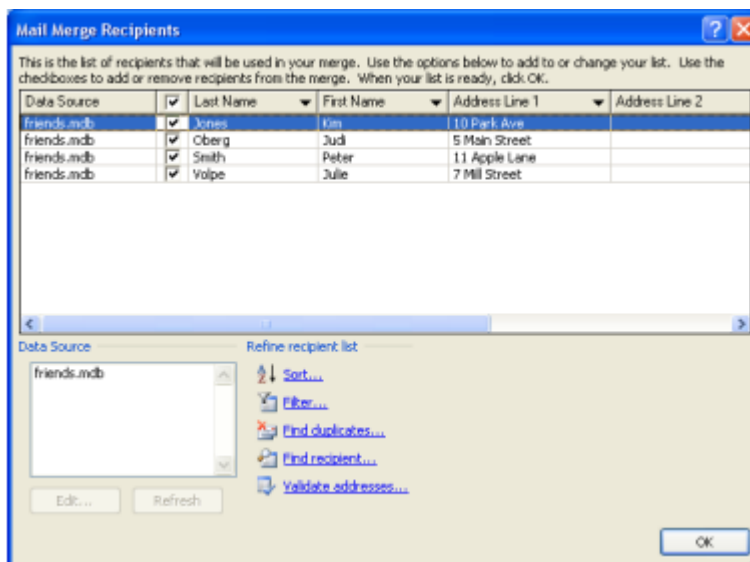
- 1) Click Use the current document under Select starting document
- 2) Click Next: Select recipients

Step 3. – Select Recipients

The recipients can come from either an existing Excel file, an Access table or you can create a new list in Word.

If Using an Existing List:

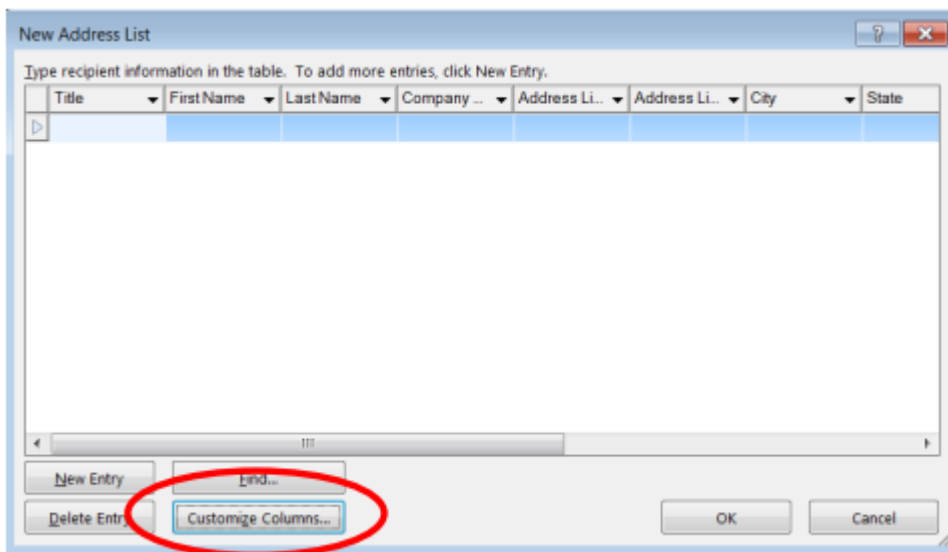
- 1) Click Use an existing list under Select recipients
- 2) Click Browse
- 3) Select the file
- 4) Click Open
- 5) Select the worksheet tab name that contains the data
- 6) Click OK (Mail Merge Recipients opens showing the file data)
- 7) Click OK



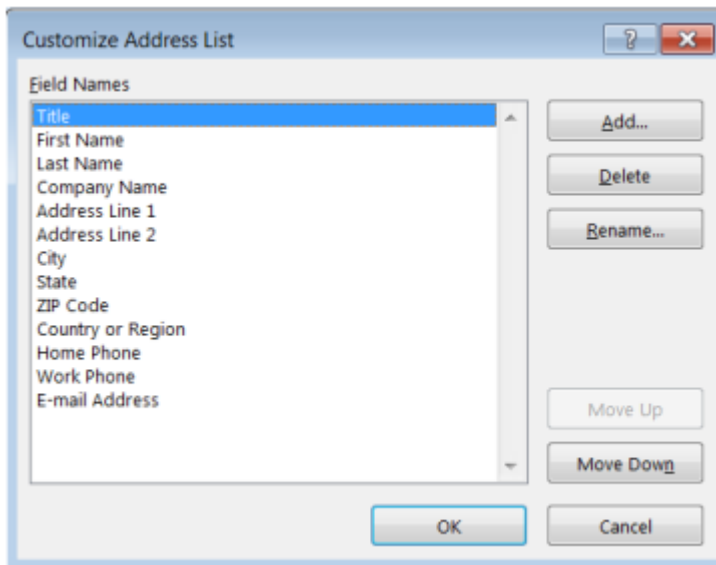
- 8) Click Next: Write your letter

If Creating a New List:

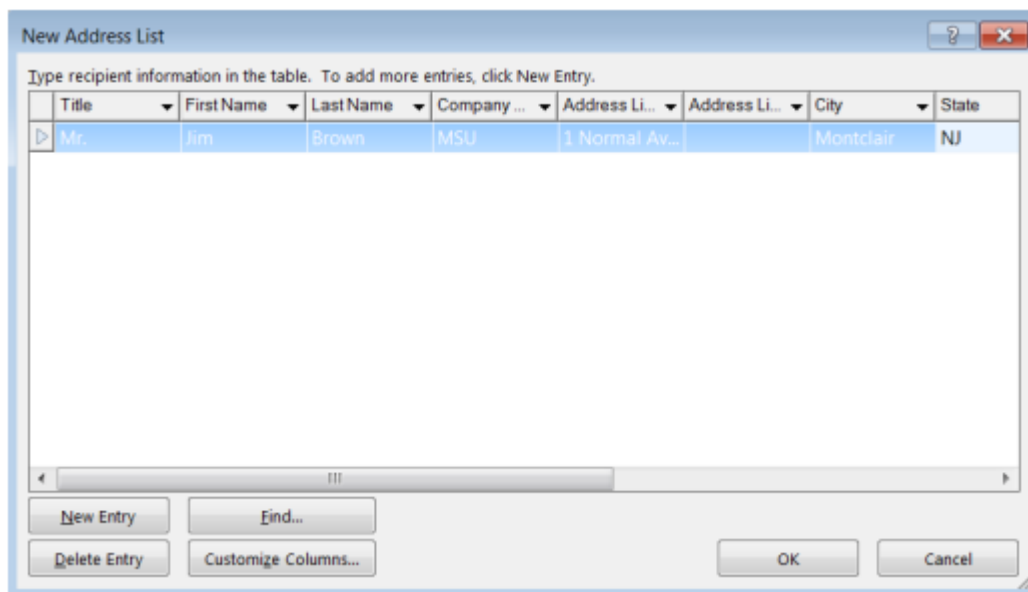
- 1) Click Type a new list under Select recipients
- 2) Click Create
- 3) Click Customize Columns to modify the list of fields



- 4) Delete any unnecessary field names and/or add new ones
- 5) Click OK



- 6) Begin typing records, hitting TAB to advance to the next field and to continue adding new records



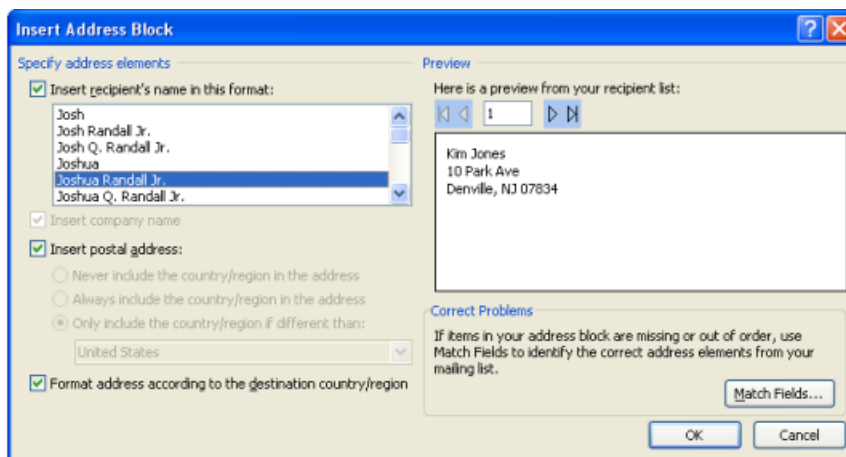
- 7) Click OK
- 8) Click Save

The recipients list will be saved as a separate file as a Microsoft Access file type. It is saved in the My Data Sources folder. It is recommended to save the file in this folder.

- 9) Click Next: Write your letter

Step 4.– Write Your Letter

- 1) If including an address, click the location in your document where the address data will be inserted
- 2) Click Address block...
- 3) Select the address elements you want included
- 4) Click OK



The field name will look like this: <<AddressBlock>>

The address block will insert the following fields including any necessary punctuation: First Name, Last Name, Company, Address 1, Address 2, City, State, Postal Code. If your fields do not match the ones listed above or you are not using address fields, click More items...

- 5) Click on the field from the list
- 6) Click Insert
- 7) Click Close

The field name will look like this - «First_Name»

- 8) Repeat this step until all fields have been inserted.

Remember to put spaces and punctuation where needed.

- 9) Click Next: Preview your letters

Step 5.– Preview Your Letters

Page 90 of 116	Ministry of Labour and Skills Author/Copyright	Operate Personal Computer	Version -1 Aug, 2022
----------------	---	---------------------------	-------------------------

Here is where you can preview the first page with the fields filled in. Click Next: Complete the merge

Step 6. – Complete the Merge

- 1) Click Print to send directly to the printer
- 2) Click Edit individual letters to create a new file

Remember to save your document as you go. The next time you open your document and click on Step-by-Step Mail Merge, the data source file will be attached.

Mail Merge – Labels

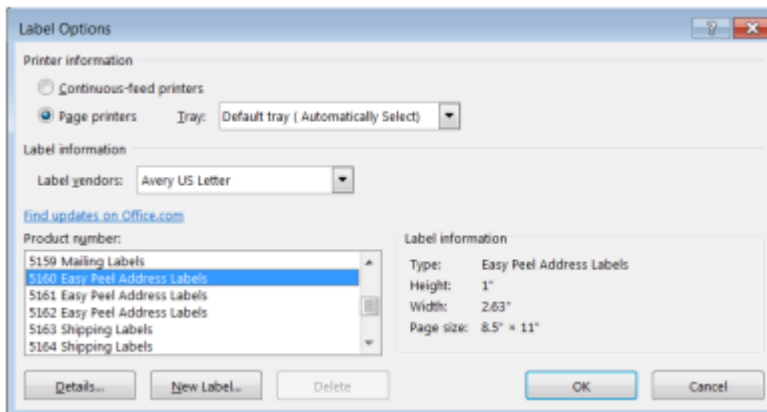
- 1) Create a new blank document
- 2) Click the Mailings tab
- 3) Click Start Mail Merge
- 4) Click Step-by-Step Mail Merge Wizard

Step 1. – Select Document Type

- 1) Click Labels for the document type
- 2) Click Next: Starting document

Step 2. – Select Starting Document

- 1) Click Use the current document
- 2) Click Label options under Change document layout
- 3) Choose the label style you are using
- 4) Click OK



5) Click Next: Select recipients

Step 3. – Select Recipients

- 1) Click Use an existing list under Select recipients (or you can create a new list)
- 2) Click Browse
- 3) Select the file
- 4) Click Open
- 5) Select the worksheet tab name that contains the data
- 6) Click OK
- 7) Click Next: Arrange your labels

Step 4.– Arrange Your Labels

- 1) Click in the first label box and click on either Address block or More items to insert the data fields
- 2) Click Update all labels to include the fields on all labels
- 3) Click Next: Preview your labels



Step 5.– Preview Your Labels

Here is where you can preview the labels.

Click Next: Complete the merge

Step 6.– Complete the Merge

Click Print to send directly to the printer

OR

Click Edit individual labels to create a new file

5.4. Inserting Tables and Images

Insert Tab

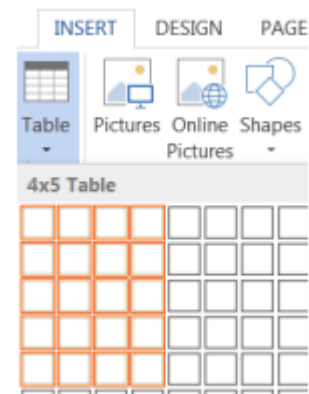
The Insert Tab commands insert different elements into your document like tables and illustrations.

Tables Group

You may choose preformatted tables or add the number of rows and columns you want. For this exercise, you will create a 3x5 table to track DVD's on loan to friends.

To insert a table into your document:

1. Click the Add a Table icon under the Insert Tab.
2. Select a 3-column, 5-row area in the grid.
3. Left-click when you are ready to insert the table.



Apply a Table Style

1. Click into the table to activate the Table Tools tab.
2. Choose a new design from the Design Tab.

Complete table as shown below:

List of DVDs on loan

Title	Genre	Borrower
Batman	Action	Lisa
Harry Potter	Adventure	Carlos
Elf	Comedy	Jess
Chicago	Musical	Tim

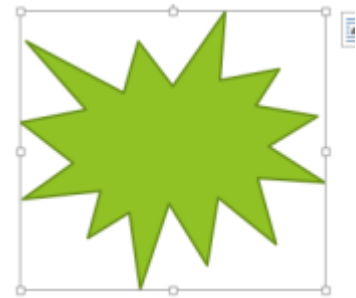
TIP: Sort the list of DVDs to locate them easier (imagine if you had a longer list). Click into the table to activate. Under the Layout tab, click Sort to sort by title (you could also sort by name if you wanted to know who had what movies).

Illustrations

The Illustrations Group has commands to insert pictures, shapes, charts, and more.

How to insert a shape

1. Click the Shapes button in the Illustrations Group
2. Click the first shape (Explosion 1) in Stars and Banners.
3. Place mouse pointer (cross) in a blank area.
4. Click and drag your mouse to “draw” the shape.
5. Let go of the mouse button when finished.



How to add text to a shape

1. Place mouse pointer arrow in shape area.
2. Click right mouse button once.
3. Click “Add Text” from menu.
4. Type “Hello”.

How to move a shape

1. Place mouse pointer over shape.
2. Look for cross-like move arrow tool.
3. Click and drag your shape to a new spot.

How to re-size a shape

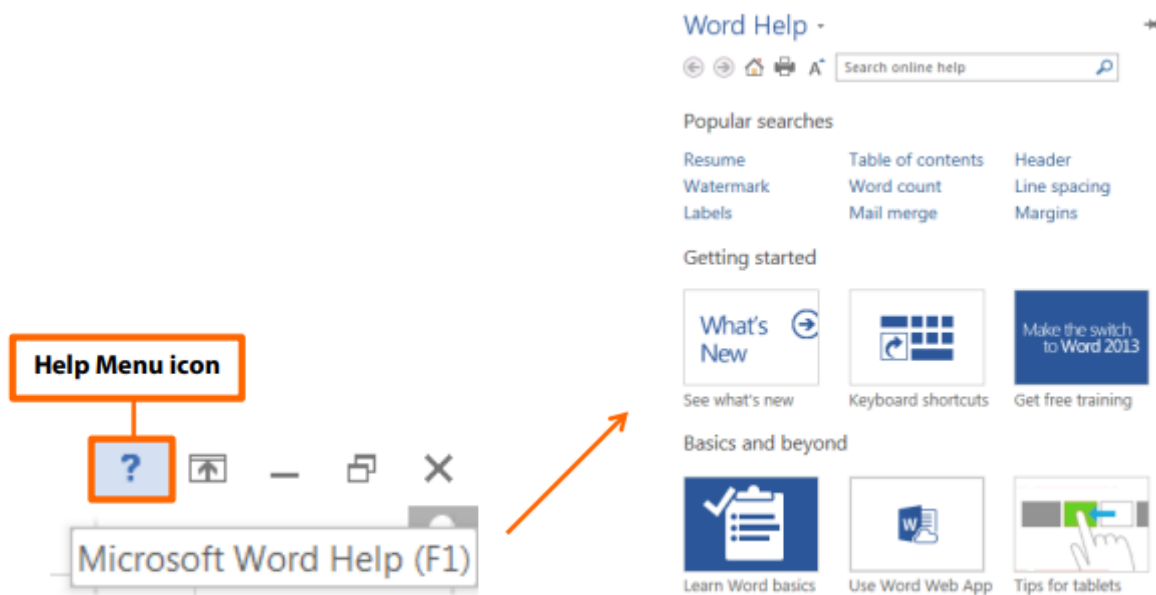
1. Click into the shape.
2. Look for squares around the frame.
3. Click and drag a frame square.
 - a. Drag a corner out to enlarge proportionally.

Steps for inserting other types of illustrations are similar; try inserting another illustration on your own.

Word Help

The Help Menu is an excellent resource for learning how to use software. Click the question mark icon near the top right corner of any Office 2016 program window to

Access Help content.



5.5. Selecting Basic Documents Print Settings

Word offers a variety of page layout and formatting options that affect how content appears on the page. You can customize the **page orientation**, **paper size**, and **page margins** depending on how you want your document to appear.

Page orientation

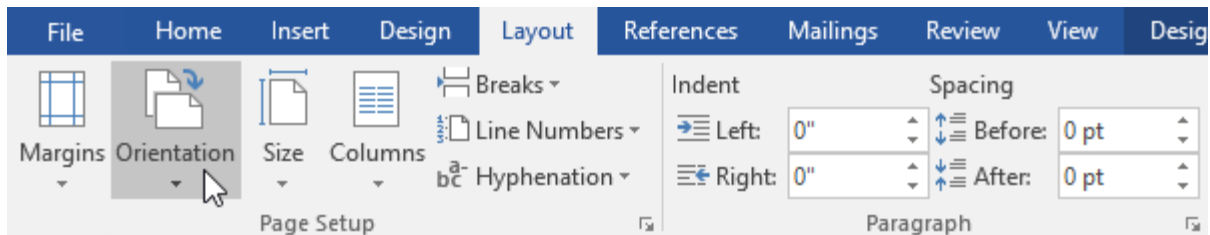
Word offers two page orientation options: **landscape** and **portrait**. Compare our example below to see how orientation can affect the appearance and spacing of text and images.

- **Landscape** means the page is oriented **horizontally**.
- **Portrait** means the page is oriented **vertically**.

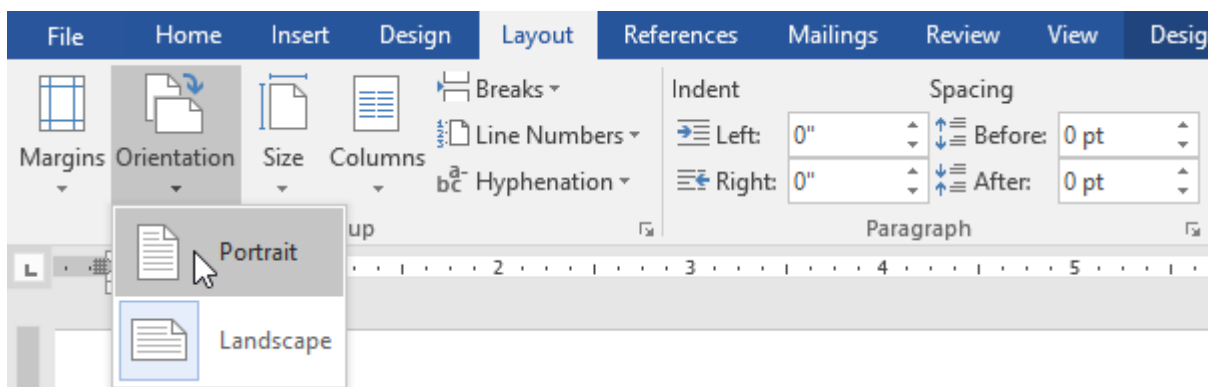
To change page orientation:

Step 1. Select the **Layout** tab.

Step 2. Click the **Orientation** command in the Page Setup group.



Step 3. A drop-down menu will appear. Click either **Portrait** or **Landscape** to change the page orientation.



Step 4. The page orientation of the document will be changed.

Page 97 of 116	Ministry of Labour and Skills Author/Copyright	Operate Personal Computer	Version -1 Aug, 2022
----------------	---	---------------------------	-------------------------

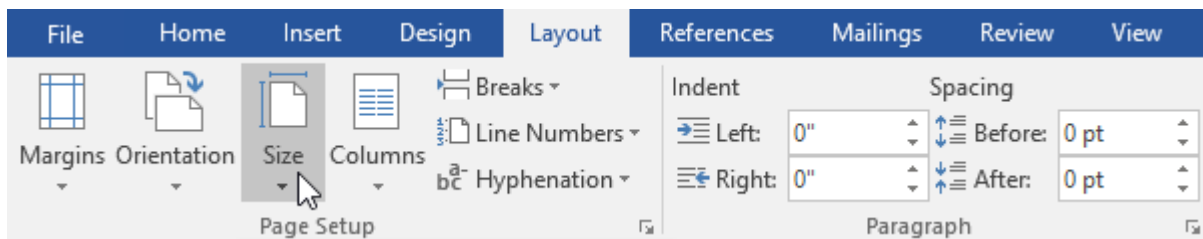
Page size

By default, the **page size** of a new document is 8.5 inches by 11 inches. Depending on your project, you may need to adjust your document's page size. It's important to note that before modifying the default page size, you should check to see which page sizes your printer can accommodate.

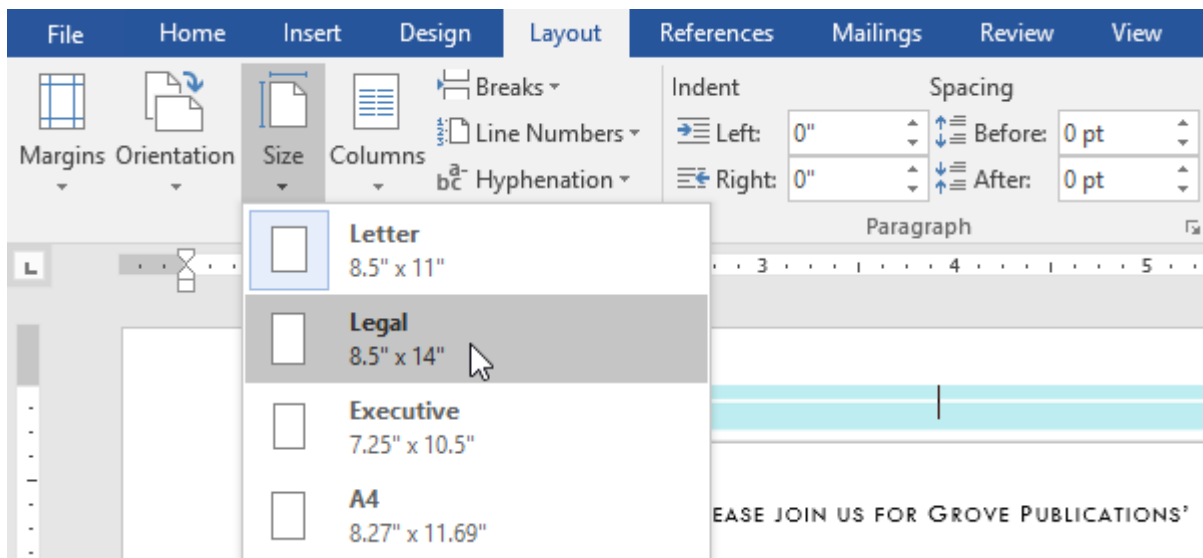
To change the page size:

Word has a variety of **predefined page sizes** to choose from.

Step 1. Select the **Layout** tab, then click the **Size** command.



Step 2. A drop-down menu will appear. The current page size is highlighted. Click the desired **predefined page size**.



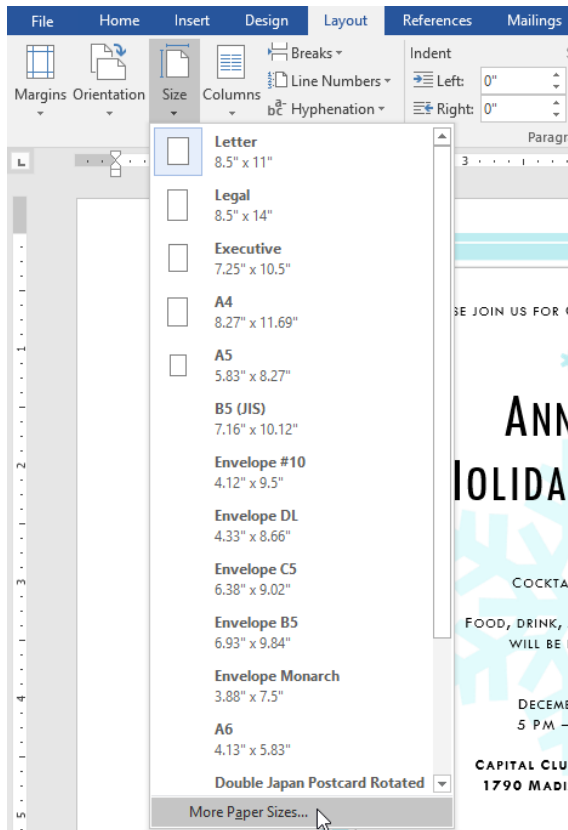
Step 3. The page size of the document will be changed.

To use a custom page size:

Word also allows you to customize the page size in the **Page Setup** dialog box.

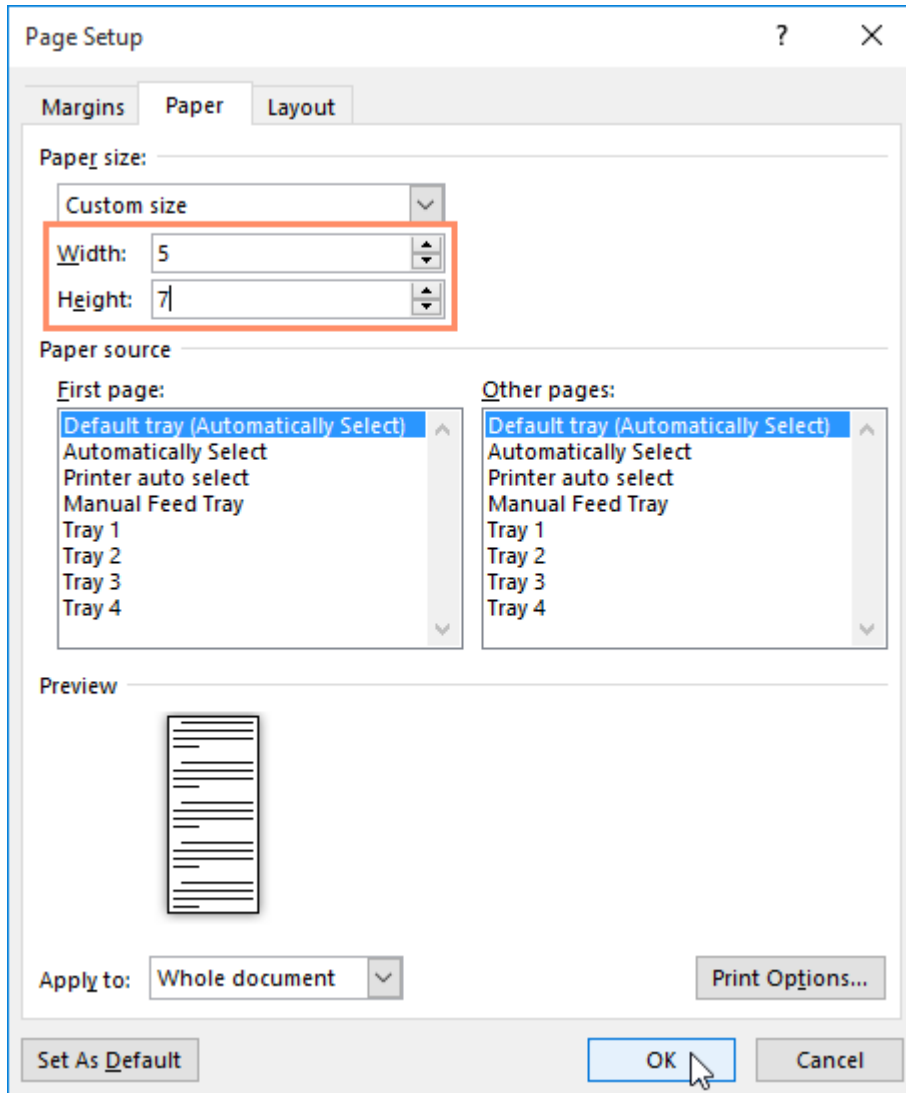
Page 98 of 116	Ministry of Labour and Skills Author/Copyright	Operate Personal Computer	Version -1 Aug, 2022
----------------	---	---------------------------	-------------------------

Step 1. From the **Layout** tab, click **Size**. Select **More Paper Sizes** from the drop-down menu.



Step 2. The **Page Setup** dialog box will appear.

Step 3. Adjust the values for **Width** and **Height**, then click **OK**.



Step 4. The page size of the document will be changed.

Page margins

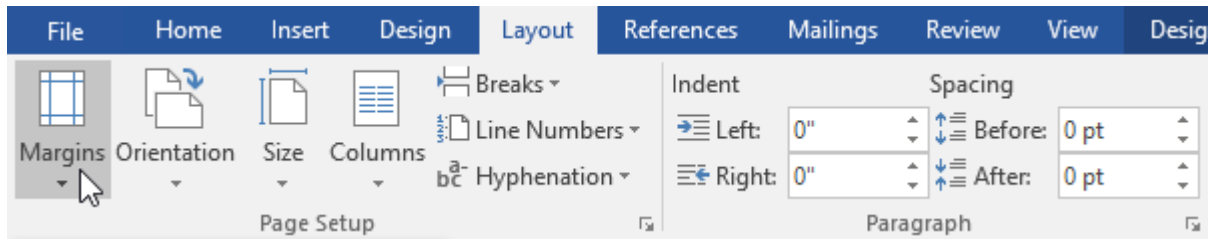
A **margin** is the **space** between the text and the edge of your document. By default, a new document's margins are set to **Normal**, which means it has a one-inch space between the text and each edge. Depending on your needs, Word allows you to change your document's margin size.

To format page margins:

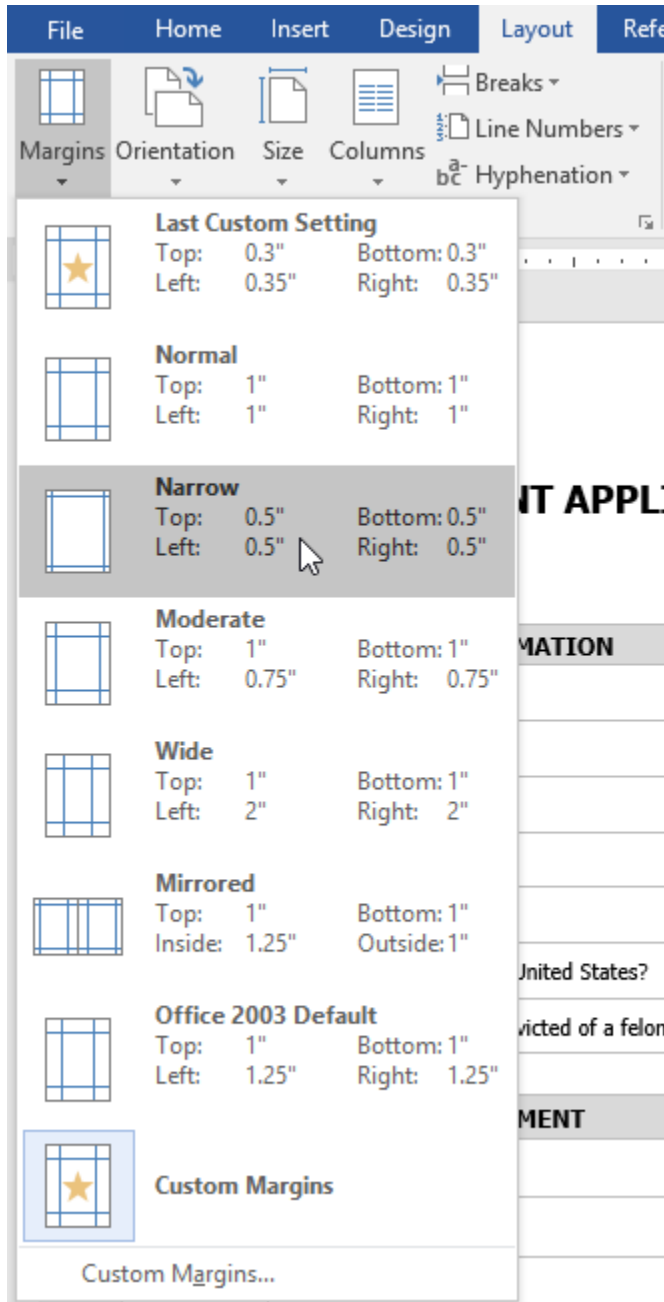
Word has a variety of **predefined margin sizes** to choose from.

Page 100 of 116	Ministry of Labour and Skills Author/Copyright	Operate Personal Computer	Version -1 Aug, 2022
-----------------	---	---------------------------	-------------------------

Step 1. Select the **Layout** tab, then click the **Margins** command.



Step 2. A drop-down menu will appear. Click the **predefined margin size** you want.

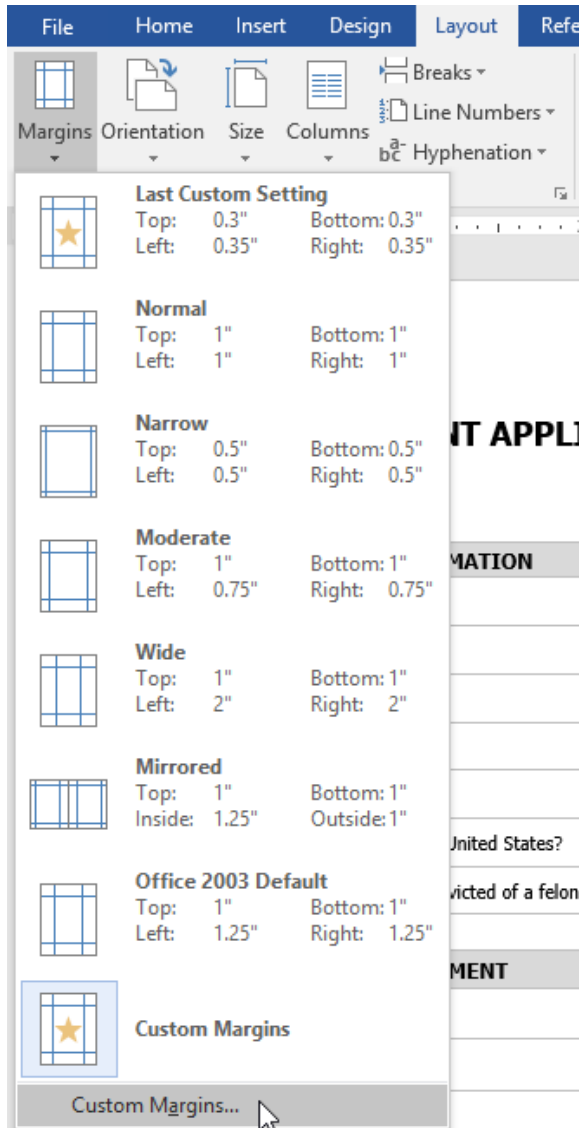


Step 3. The margins of the document will be changed.

To use custom margins:

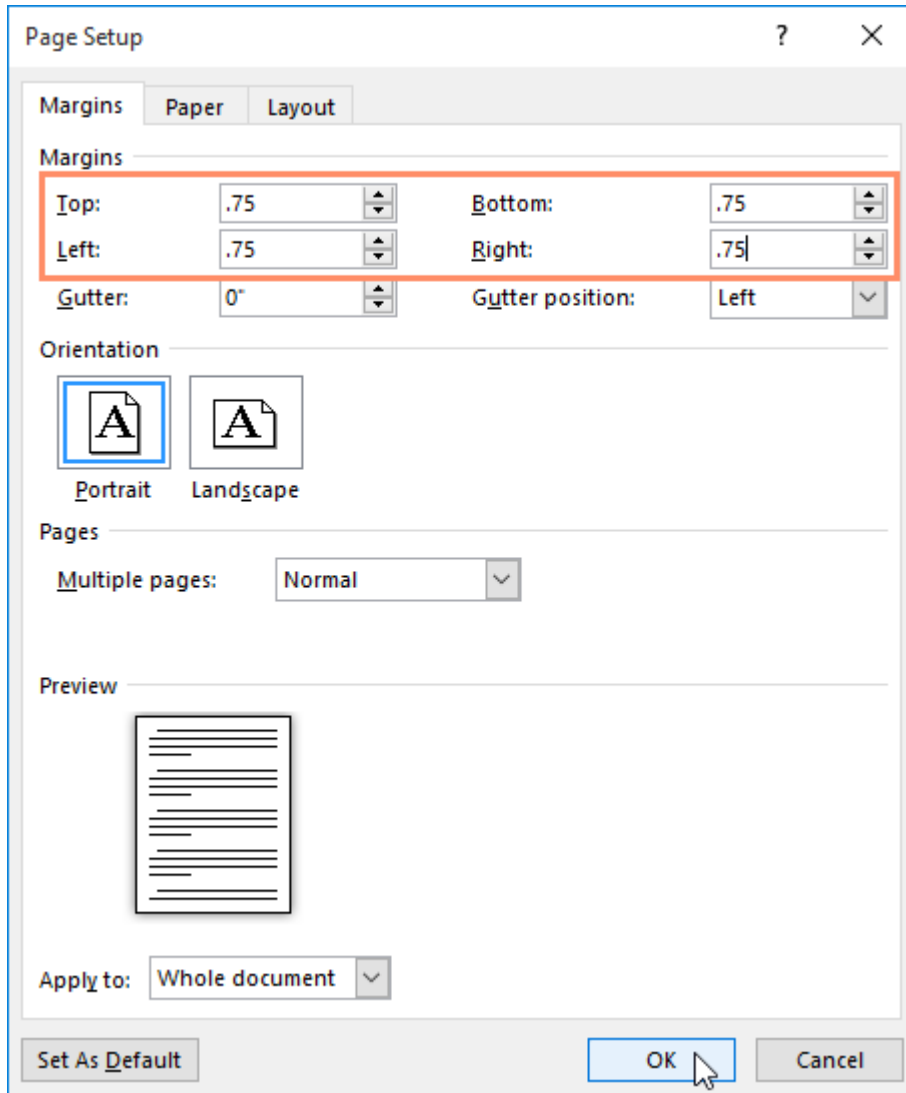
Word also allows you to customize the size of your margins in the **Page Setup** dialog box.

Step 1. From the **Layout** tab, click **Margins**. Select **Custom Margins** from the drop-down menu.



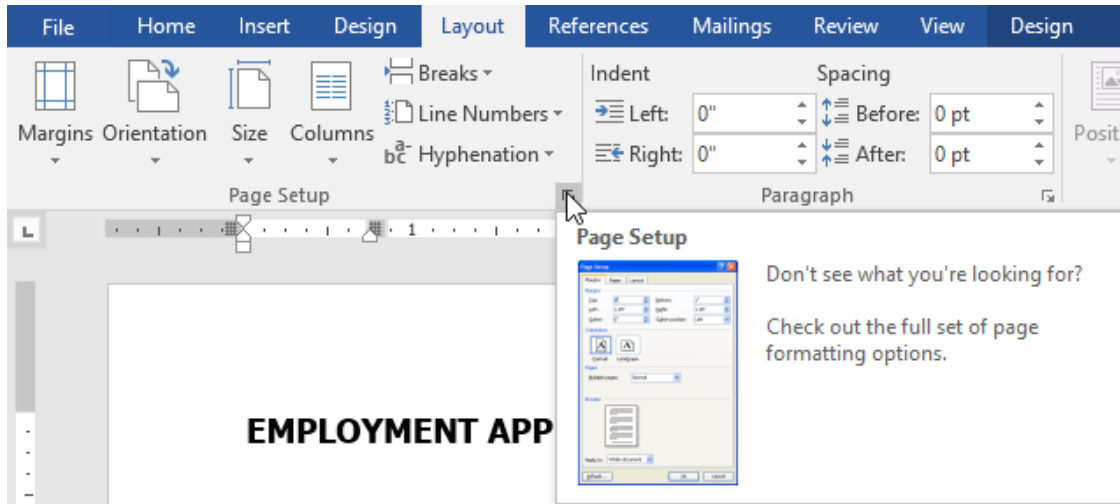
Step 2. The **Page Setup** dialog box will appear.

Step 3. Adjust the values for each margin, then click **OK**.



Step 4. The margins of the document will be changed.

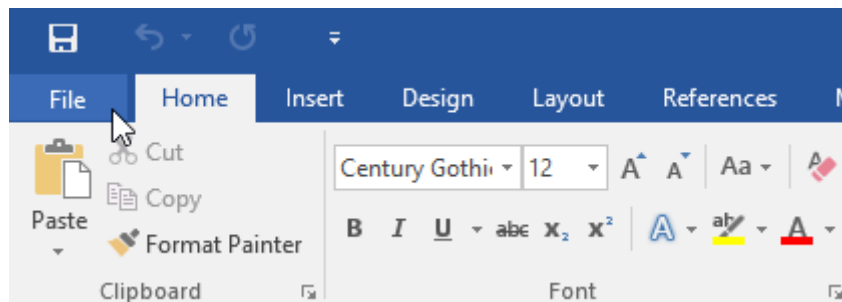
Alternatively, you can open the Page Setup dialog box by navigating to the Layout tab and clicking the small **arrow** in the bottom-right corner of the **Page Setup** group.



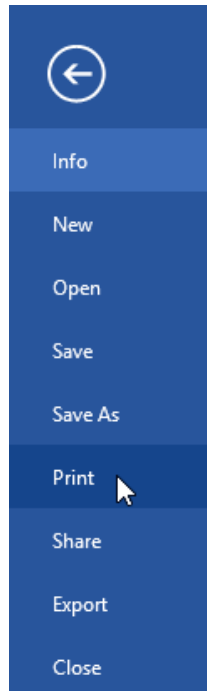
Printing Documents

To access the Print pane:

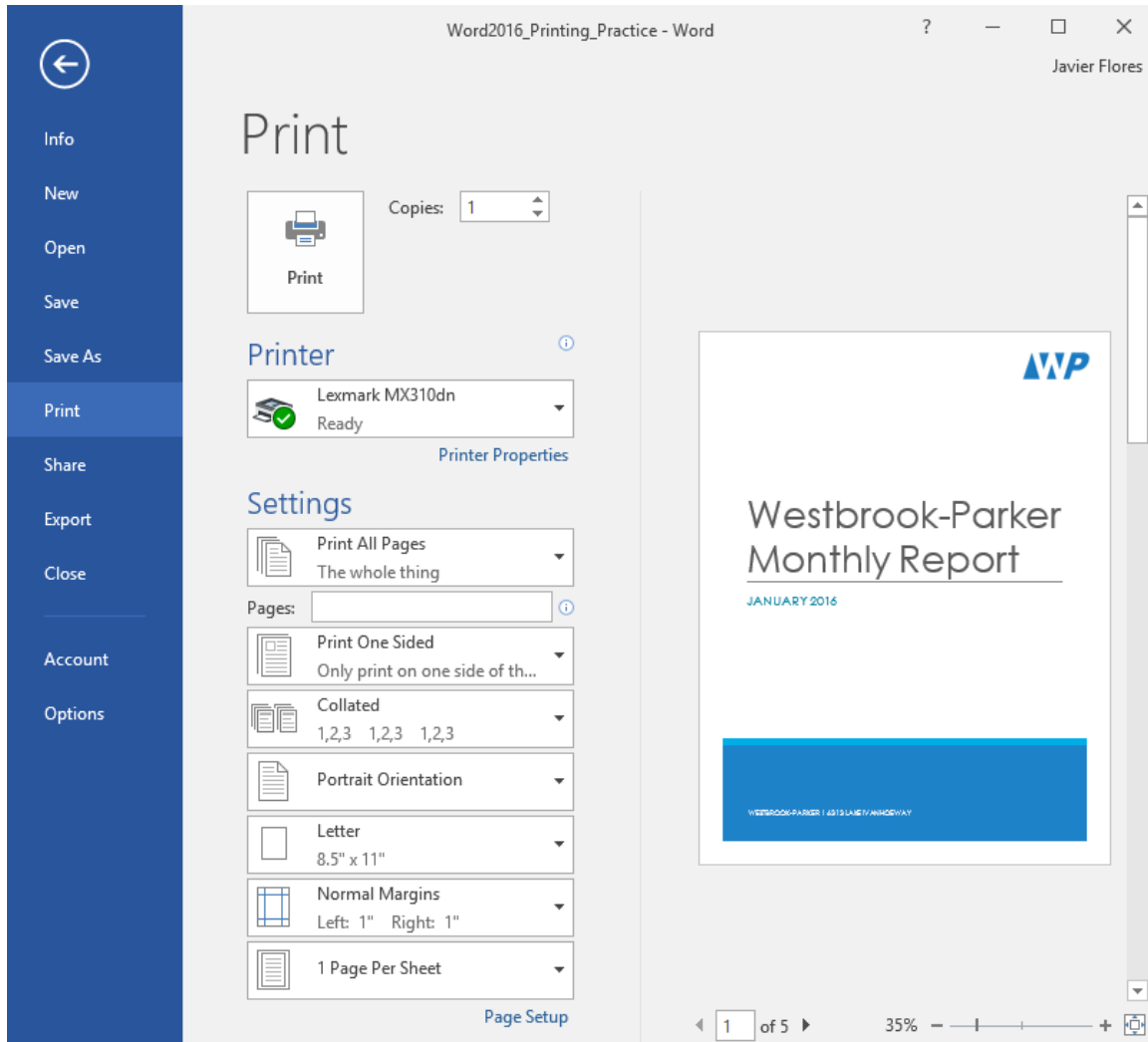
Step 1. Select the **File** tab. **Backstage view** will appear.



Step 2. Select **Print**. The **Print** pane will appear.



Step 3. Click the buttons in the interactive below to learn more about using the Print pane.



Preview Pane

Here, you can see a preview of how your document will look when printed.

You can also access the Print pane by pressing **Ctrl+P** on your keyboard.

To print a document:

1. Navigate to the **Print** pane, then select the desired **printer**.
2. Enter the number of **copies** you want to print.
3. Select any additional **settings** if needed.
4. Click **Print**.

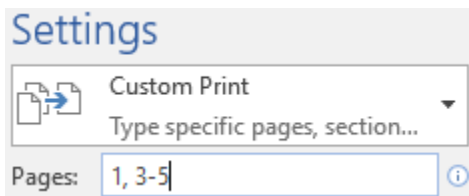
Custom printing

Sometimes you may find it unnecessary to print your entire document, in which case **custom printing** may be more suited for your needs. Whether you're printing **several individual pages** or a **range of pages**, Word allows you to **specify** exactly which pages you'd like to print.

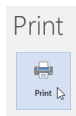
To custom print a document:

If you'd like to print individual pages or page ranges, you'll need to separate each entry with a **comma** (1, 3, 5-7, or 10-14 for example).

1. Navigate to the **Print** pane.
2. In the **Pages:** field, enter the pages you want to print.



3. Click **Print**.



Self-check-1

Multiple Choice: - Select the best response for the following statements.

1. The first screen you see when you open Word 2016 is called the:

- | | |
|------------------|-----------------|
| a. Word screen | c. Start screen |
| b. Recent screen | d. Screen saver |

2. Which of the following contains the commands you use most often, such as Save, Undo, and Repeat?

- | | |
|------------------------|-------------------------|
| a. Quick Access Screen | c. Quick Access Toolbar |
| b. Quick toolbar | d. Quick command |

3. The headings that appear on the Ribbon, such as File, Home, and Insert, are called:

- | | |
|-----------|--------------|
| a. groups | c. shortcuts |
| b. tabs | d. menus |

4. Which command would you use to save a document for the first time?

- | | |
|------------|----------------------------|
| a. Save | c. Save for the first time |
| b. Save As | d. none |

5. Which of the following options would you use when saving a document with a new filename?

- | | |
|------------|-----------|
| a. Save | c. Ctrl+S |
| b. Save As | d. none |

True/False Circle “T” if the statement is true or “F” if the statement is false.

- The New Window command launches a new window that contains the current document.
- By selecting text, the user has the ability to cut or copy the text to the clipboard.

3. Read Mode view displays the document as it will look when printed.

Lap Test: 5Instructions

Instruction

1. Create a Directory in Drive D: make your name as the filename
2. After you finish, save your file as **Final.doc** then save it in **your folder**.
3. Create a mail merge:
 - a. Create a table fill information at sample table by your self

sample:

Name	Position	Address	Date

- b. Letter look like this

<<Date>>

<<Name>>

<<Position>>

<<Address>>

Dear <<Name>>:

I would like to inform you that we have a new schedule for this coming semester. You will now be moving up to Level 2.

Our new schedules are as follows:

Page 112 of 116	Ministry of Labour and Skills Author/Copyright	Operate Personal Computer	Version -1 Aug, 2022
-----------------	---	---------------------------	-------------------------

<u>Day</u>	<u>Time</u>
Tuesday	2:30 – 6:30
Wednesday	2:30 – 11:30
Thursday	2:30 – 11:30
Friday	2:30 – 6:30

Yours sincerely

<<Name>

Reference

<https://www.tutorialspoint.com/>

https://www.myamcat.com/samplePapers/SP_MS-EXCEL.pdf

<https://edu.gcfglobal.org/en/topics/excel/>

<https://www.dtwd.wa.gov.au/sites>

<https://aspire-solidus-production.s3-ap-southeast-2.amazonaws.com>

Participants of this Module (training material) preparation

No	Name	Qualification (Level)	Field of Study	Organization/ Institution	Mobile number	E-mail
1	Zerihun Abate	A(MSC)	IT	Sabata PTC	0911858358	Zedoabata2017@gail.com
2	Michael Kassahun	Bsc	IT	Misrak PTC	0989308914	Miko3mt@gmail.com
3	sewAyew W/Yohannies	Msc	IT	Sod PTC	0911716133	Sewnet1221@gmail.com
4	YonasBeyan	Msc	IT	Ethio-Italy PYC	0915007456	Yonas.beyane@gmail.com
5	AbebeMulatu	Bsc	IT	Daye PTC	0904834788	abebemulatumgh@gmail.com
6	Solomon Yilma	Msc	IT	Asossa PTC	0911954729	sollangano@gmail.com
7	YohannesBekele	Bsc	Computer science	Hawasa PTC	0939797218	Ybekele71@gmail.com
8	TewdrosGirma	Msc	IT	Sheno PTC	0911835002 0912068479	temutd@gmail.com
9	SubagadisGigar	Bsc	Computer science&ICT	MoLS	0920193859	subiartpromo@gmail.com

